

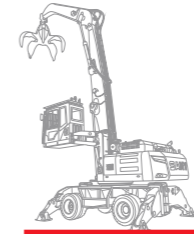


S a n y M a r i n e

MATERIAL HANDLING MACHINE



QUALITY CHANGES THE WORLD



▶ Contents

MATERIAL HANDLING MACHINE



01

INTRODUCTION

About Sany Marine	04
Production R&D System	06
Reliable Service	07

02

MATERIAL HANDLING MACHINE

MATERIAL HANDLING MACHINE	10
SMHW30	12
SMHC35	14
SMHW40-E	16
SMHC45V	18
SMHW48V	20
SMHC50V-D	22
SMHC70V	24
SMHW80	26
SMHW30G5	28
SMHW48G5	30
SMHC160	32
SMHC100	34
Attachments	36
Construction Cases	38

COMPANY OVERVIEW

Established in 2005, SANY Marine specializes in port and logistics equipment, including mobile port machinery (reach stackers, empty container handlers), port cranes (STS, RTG, RMG, jib cranes, MHC, ship unloaders, ship loaders), logistics equipment (material handlers, heavy-duty forklift trucks, electric terminal tractors), and telehandlers.

The Zhuhai Industrial Park of SANY Marine spans 2 million square meters, with 300,000 square meters for manufacturing facilities and another 300,000 square meters for large port machinery assembly. The park has an annual production capacity valued at \$2.1 billion.

COMPANY VISION

Become a leader in logistics equipment driven by globalization, digitization and efficient operation.



QUALITY CHANGES THE WORLD

► Production R&D System



Leading-edge Manufacturing Systems

SANY Marine, a leader in the field, has established an intelligent "Lighthouse Factory," integrating real-time data, centralized control, and flexible production islands. With six production lines, 18 islands, and 100 robots, the fully digitalized process spans material handling to assembly. This has led to a 30% increase in efficiency and a 30% reduction in lead times, enabling the production of one reach stacker every six hours. Annual output now totals 15 billion RMB, with large port machinery contributing 5 billion RMB and small port equipment 10 billion RMB.



Leading R&D and Testing Capabilities

Leveraging global resources, SANY Marine has built a top R&D team of 500, with 50% holding master's degrees or higher. The company invests 6% of annual revenue in R&D, resulting in 736 patents, including 438 inventions, 29 international patents, and contributions to 23 industry standards.



Environmental Protection

Equipped with an eco-friendly engine that complies with the latest National IV standards and uses environmentally friendly paint to effectively reduce pollution. A full range of new energy products have achieved large-scale mass production and delivery.

► Reliable Service

Reliable Service



Service Concept

- reply in 15 minutes
- arrive in 2 hours
- general fault solved in 1 day
- customer complaints resolved in 2 days
- general remaining problem solved in 7 days



Service Team

- 400 service engineers
- 60% obtained advanced skill level or above
- 300+ service vehicles
- 365 days*24h service



Service Outlets

- overseas office around globally
- 35 domestic service outlets
- service engineer standby in major cities



Accessory Storage

The four-in-one parts supply guarantee system of headquarters warehouse, regional central warehouse, provincial warehouse and municipal warehouse stores more than 100,000 kinds of spare parts

MYSANY

"MYSANY" allows global real-time monitoring of equipment status and reports, along with services like online support, community interaction, parts marketplace, repair requests, maintenance scheduling, and product knowledge.



Material handler is a kind of multi-purpose and efficient material handling equipment, which is widely used in major ports, railways and various places for loading, unloading and stacking of scrap steel and bulk cargo.

Sany independently researched and developed material handler has a number of international leading core technologies, including energy-saving control technology, hydraulic linkage technology, anti-overturning protection technology, automatic fault detection and real-time data display technology, with excellent overall performance, product safety, reliability and energy saving and high efficiency, can fully meet the needs of customers.



The models of Sany material handler expand from 35 tons, 40 tons to 70~160 tons, tire and crawler chassis full coverage, to provide a new solution for steel mills, ports, terminals, renewable resources and other customers.

▶ Wheel Type



SMHW36V



SMHW40-E



SMHW48V



SMHW80

▶ Crawler-Type



SMHC35V



SMHC45V



SMHC50V-D (Towing Power)



SMHC70V



SMHC100



SMHC160

SMHW30

SANY Material Handling Machine

30-series material handlers are mainly suitable for all kinds of bulk material handling the machine is light and flexible with stable performance and high work efficiency.

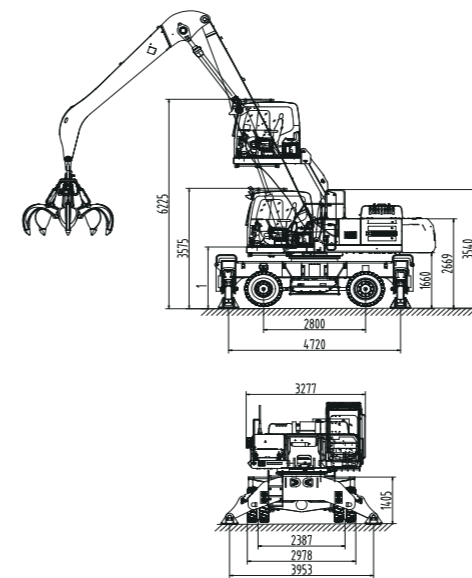


- ▶ **1** **Hydraulic system**
Independent researched and developed electronically controlled positive flow hydraulic system, fuel consumption is 10% lower than that of previous ones.
- ▶ **2** **Power system**
engine and hydraulic pump curves perfectly match, system simulation reduces fuel consumption in the working area.
- ▶ **3** **Control program**
engine automatic idle, multi-speed adjustable, throttling loss reduced by 60%.
- ▶ **4** **Larger grab weight**
a single grab capacity up to 4tons, according to different cargo, the efficiency reaches 100 ~ 200 tons/hour.
- ▶ **5** **Faster response**
the response time of each action is as low as 300ms.
- ▶ **6** **Tire chassis**
Travel speed 20km/h, easy to move.

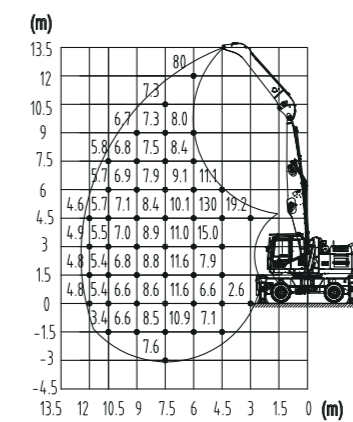
▶ Product Parameters

Technical Parameter				Configuration Parameter				
ITEM		UNIT	SMHW30	CONFIGURATION		UNIT	SMHW30	
Power System	Engine	Model	-	Mitsubishi D06FRC	Hydraulic System	Stick Cylinder	-	Sany
		Rated power	kW/rpm	147/2100		Max. System Pressure	MPa	34.5
		Torque	Nm/rpm	750/1350		Hydraulic Oil Tank	L	230
		Emission	-	com I	Slewing Gear	Slewing Bearing	-	Sany
		Oil Tank Capacity	L	465		Max. Rotating Speed	rpm	8
Chassis	Track Width	mm	2387	Cabin	Cabin Lift Height	mm	2650	
	Wheel Base	mm	2800		Basic Parameters	Boom Configuration	m	12
	Support width (lengthways)	mm	4750	m			Boom 7.3	Boom 8.6
	Support width (crosswise)	mm	4140	m		Stick 5.1	Stick 5.6	
	Turning Radius	mm	8000	Max. Operating Radius		m	10.5	13.5
	Max. Travelling Speed	km/h	20	Max. Operating Height	m	12	13.5	
Hydraulic System	Type Of Control	-	Electronically Controlled Positive Flow System	Max. Operating Depth	m	-3	-3	
	Main Pump	Model	-	Rexroth	Max. Operating Radius (Grab Not Included)	t	4.6	3.4
		Rated Flow	L/min	2×260				
	Reducer	-	Sany					
	Boom Cylinder	-	Sany					

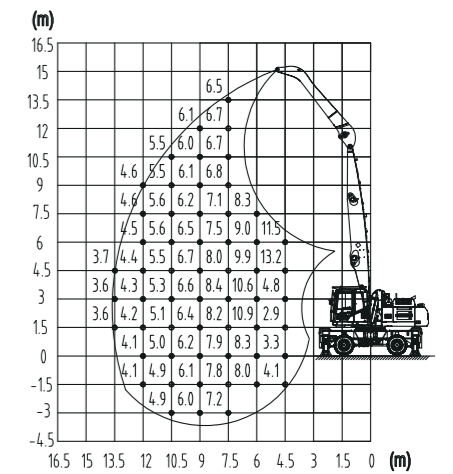
▶ Dimensions



SMHW30 Lift capacities of material handler (Boom 7.3m, Stick 5.1m, Unit:t)



SMHW30 Lift capacities of material handler (Boom 8.6m, Stick 5.6m, Unit:t)



SMHC35

SANY Material Handling Machine

35-series material handlers are mainly used in steel mills for scrap and bulk cargo loading, unloading and stacking operations, can offer high efficiency, with excellent machine performance, safety and reliability.



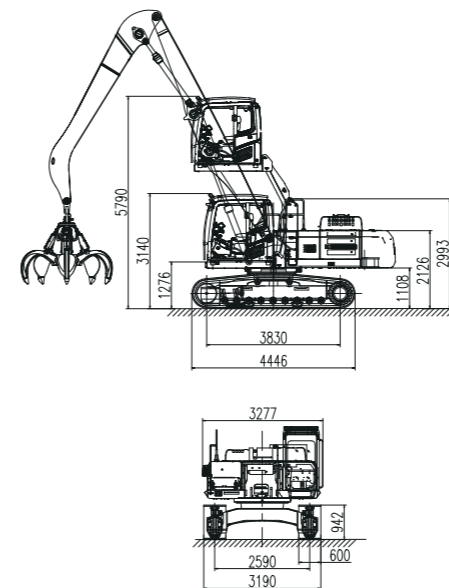
- ▶ **1** **Hydraulic system**
Independent researched and developed electronically controlled positive flow hydraulic system, fuel consumption is 10% lower than that of last year.
- ▶ **3** **Control program**
engine automatic idle, multi-speed adjustable, throttling loss reduced by 60%.
- ▶ **5** **Faster response**
the response time of each action is as low as 300ms.

- ▶ **2** **Power system**
engine and hydraulic pump curves perfectly match, system simulation reduces fuel consumption in the working area.
- ▶ **4** **Larger grab weight**
a single grab capacity is up to 4 tons, according to different cargo, the efficiency reaches 100 ~ 200 tons/hour.
- ▶ **6** **Track chassis**
steady and efficient.

▶ Product Parameters

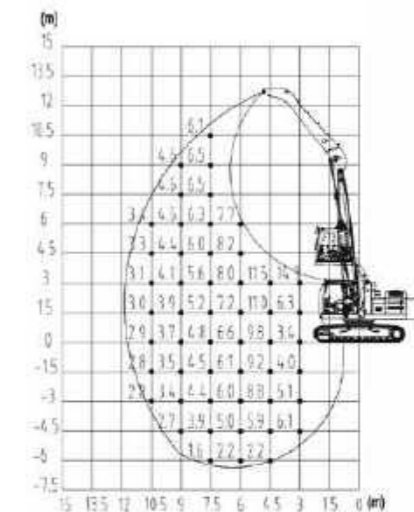
Technical Parameter				Configuration Parameter				
ITEM		UNIT	SMHC35	CONFIGURATION	UNIT	SMHC35		
Power System	Engine	Model	-	Mitsubishi D06FRC	Hydraulic System	Stick Cylinder	-	Sany
		Rated power	kW/rpm	147/2100		Max. System Pressure	MPa	34.5
		Torque	Nm/rpm	750/1350		Hydraulic Oil Tank	L	230
		Emission	-	com III	Slewing Gear	Slewing Bearing	-	Sany
		Oil Tank Capacity	L	465		Max. Rotating Speed	rpm	8
Traveling Gear	Track width	mm	2590	Cabin	Cabin Lift Height	mm	2650	
	Wheel Base	mm	3830		Boom Configuration		m	12
	Track Width	mm	600				m	Boom 6.8
	Max. Travelling Speed	km/h	5			m	Stick 5.6	
Hydraulic System	Type Of Control		-	Electronically Controlled Positive Flow System	Basic Parameters	Max. Operating Radius	m	10.5
	Main Pump	Model	-	Rexroth		Max. Operating Height	m	10.5
		Rated Flow	L/min	2×260		Max. Operating Depth	m	-6
	Reducer	-	-	Sany		Max. Operating Radius (Grab Not Included)	t	3.4
	Boom Cylinder	-	-	Sany				

▶ Dimensions



▶ Scope Of Work

SMHC35 Lift capacities of material handler (Boom 6.8m, Stick 5.6m, Unit:t)



SMHW40-E

SANY Material Handling Machine

The SMHW40-E is a rechargeable tire-mounted material handler, ideal for scrap steel, forestry, and bulk cargo handling. It offers zero emissions, comfort, and low operating costs.



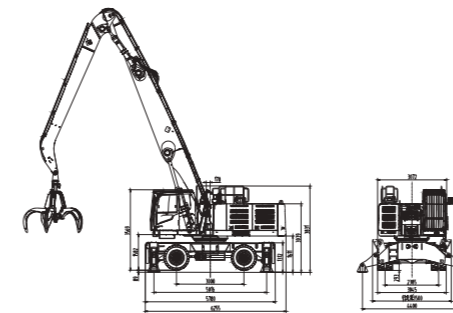
- ▶ **1 Low Operating Costs**
Energy recovery systems reduce costs to 20% of diesel equivalents.
- ▶ **3 Higher Efficiency**
Electric control and independent power swing boost efficiency by 20%.

- ▶ **2 Long Battery Life**
Large-capacity battery supports 7 hours of continuous operation.
- ▶ **4 Strong Mobility**
Tire chassis ensures high gradeability, small turning radius, and flexibility in relocation.

▶ Product Parameters

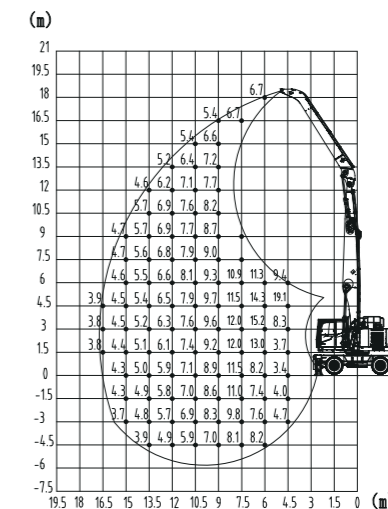
Configuration Parameter				Configuration Parameter					
ITEM		UNIT	SMHW40-E	CONFIGURATION		UNIT	SMHW40-E		
Power System	Electric motor	Model	-	Inovance	Slewing Gear	Slewing Bearing	-	SOT	
		Rated power	kW/rpm	160/2040, 80/1900		Max. Rotating Speed	rpm	8	
		Battery voltage	VDC	618	Cabin	Cabin Lift Height	mm	2650	
	Electronic control	-	Inovance	Air conditioning		-	Denso		
Battery	Model	-	CATL	Lubrication system	Mode	-	Automatic lubrication		
	Battery charge level	kWh	507		Basic Parameters	Boom Configuration		m	17
Track Width		mm	2385				m	Boom 9.8	
Wheel Base		mm	3000				m	Stick 7.5	
Support width (lengthways)		mm	5018	Max. Operating Radius (Excluding spreader)			m	16.5	
Support width (crosswise)		mm	4400			Max. Operating Height (Excluding spreader)		m	18
Turning Radius		mm	8500				Max. Operating Depth (Excluding spreader)		m
Maximum gradeability		%	30	Max. Operating Radius (Grab Not Included)		t		4	
Max. Travelling Speed		km/h	20		Type Of Control		-	Electrically controlled positive flow system	
Hydraulic System	Main Pump	Model	-	LiLong + Keda	Main valve	Model	-	Rexroth + Hengli	
		Rated Flow	L/min	2×380		Reducer	Model	-	Stub tooth
	Maximum system pressure	MPa	34	Hydraulic oil tank	L		350	Boom Cylinder	-
		Arm cylinder	-		ZTE	Arm cylinder	-		ZTE

▶ Dimensions



▶ Scope Of Work

SMHW40-E Lift capacities of material handler
(Dynamic Ar 9.8m Bucket Rod 7.5m unit-t)



SMHC45V

SANY Material Handling Machine

45V material handlers are widely used for handling loading and unloading operations of scrap steels and bulk cargo, the machine is light and flexible with stable performance and high work efficiency.



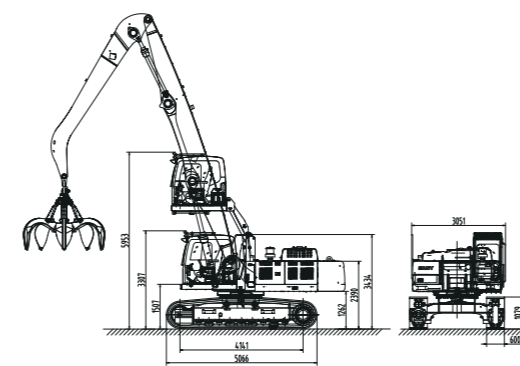
- 1 **Hydraulic system**
Independent researched and developed electronically controlled positive flow hydraulic system, fuel consumption is 10% lower than that of last year.
- 3 **Control program**
engine automatic idle, multi-speed adjustable; The throttling loss in linkage condition is reduced by 60%.
- 5 **Faster response**
the response time of each action is as low as 300ms

- 2 **Power system**
engine and hydraulic pump curves perfectly match, system simulation reduces fuel consumption in the working area.
- 4 **Larger grab weight**
a single grab capacity is up to 4 tons, according to different cargo, the efficiency is 120 ~ 260 tons/hour.
- 6 **Track chassis**
stable and efficient.

Product Parameters

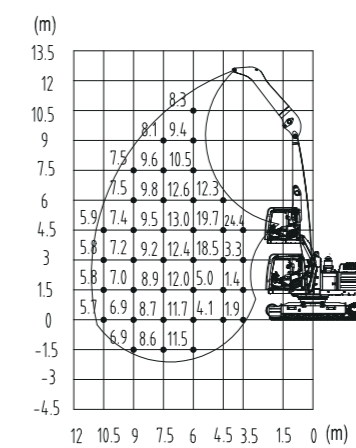
Configuration Parameter				Configuration Parameter					
ITEM		UNIT	SMHC45V	CONFIGURATION		UNIT	SMHC45V		
Power System	Engine	Model	-	Isuzu 6HK1	Slewing Gear	Slewing Bearing	-	SOT	
		Rated power	kW/rpm	212/2000		Max. Rotating Speed	rpm	8	
		Torque	Nm/rpm	1080/1500	Cabin	Cabin Lift Height	mm	2650	
		Emission	-	com I	Boom Configuration		m	11	14
		Oil Tank Capacity	L	600			m	Boom 7	Boom 8.6
Undercarriage	Track gauge	mm	2590		m	Stick 4.5	Stick 6		
	Wheelbase	mm	4140	Basic Parameters	Boom mounted at the pivot point of the slewing platform	-	Upper pivot point	Upper pivot point	
	Track width	cm	600		Max. Operating Radius	m	10.5	13.5	
	Max. Travelling Speed	km/h	5		Max. Operating Height	m	12	15	
			Max. Operating Depth		m	-1.5	-3		
Hydraulic System	Type Of Control	-	Electronically Controlled Positive Flow System	Max. Operating Radius (Grab Not Included)	t	5.9	4.1		
		Main Pump	Model	-	Kawasaki				
		Rated Flow	L/min	2×320					
	Slewing motor	-	SOT						
	Maximum system pressure	MPa	32						
Hydraulic oil tank	L	310							

Dimensions

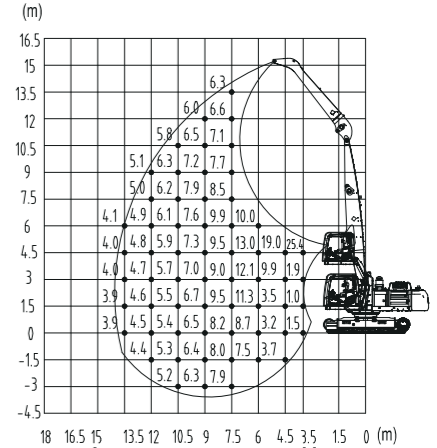


Scope Of Work

SMHC45V Lift capacities of material handler (Boom 7m, Stick 4.5m, Unit:t)



SMHC45V Lift capacities of material handler (Boom 8.6m, Stick 6m, Unit:t)



SMHW48V

SANY Material Handling Machine

48V series is widely used in railway, inland wharf for bulk material loading and unloading, a variety of boom combination for railway bulk material, steel mills, inland wharf, general cargo and other working conditions, can offer wide range of operation and high efficiency.



1 Larger grab weight
a single grab capacity can reach 4 tons,
according to different cargo, the efficiency is
150 ~ 520 tons/hour.

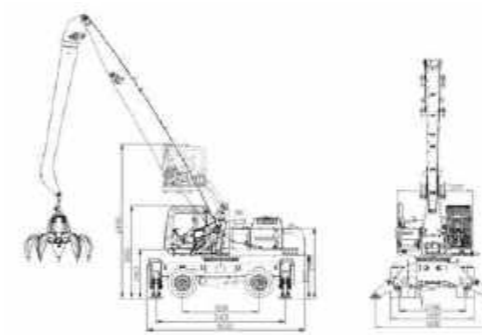
2 Faster response
the response time of each action is as low as
300ms

3 Tire chassis
Travel speed 20km/h, easy to move.

Product Parameters

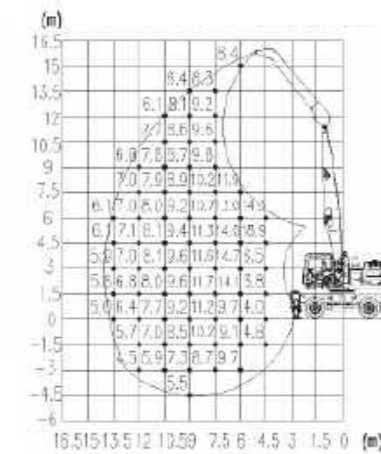
Technical Parameter				Configuration Parameter				
ITEM		UNIT	SMHW48V	CONFIGURATION		UNIT	SMHW48V	
Power System	Engine	Model	-	Isuzu 6HK1	Hydraulic System	Stick Cylinder	-	Sany
		Rated power	kW/rpm	212/2000		Max. System Pressure	MPa	32
		Torque	Nm/rpm	1080/1500		Hydraulic Oil Tank	L	310
		Emission	-	com I	Slewing Gear	Slewing Bearing	-	Sany
		Oil Tank Capacity	L	600		Max. Rotating Speed	rpm	8
Chassis	Track Width	mm	2746	Cabin	Cabin Lift Height	mm	2650	
	Wheel Base	mm	3200		Basic Parameters	Boom Configuration	m	14
	Support width (lengthways)	mm	5400	m			Boom 8.6	Boom 10.5
	Support width (crosswise)	mm	4800	m			Stick 6	Stick 7.5
	Turning Radius	mm	8800	Hydraulic System	Max. Operating Radius	m	13.5	16.5
	Max. Travelling Speed	km/h	20		Max. Operating Height	m	15	16.5
Hydraulic System	Type Of Control	-	Electronically Controlled Positive Flow System	Max. Operating Depth	m	-4.5	-4.5	
	Main Pump	Model	-	Rexroth	Max. Operating Radius (Grab Not Included)	t	6.1	5.1
		Rated Flow	L/min	2×260				
	Reducer	-	Sany					
	Boom Cylinder	-	Sany					

Dimensions

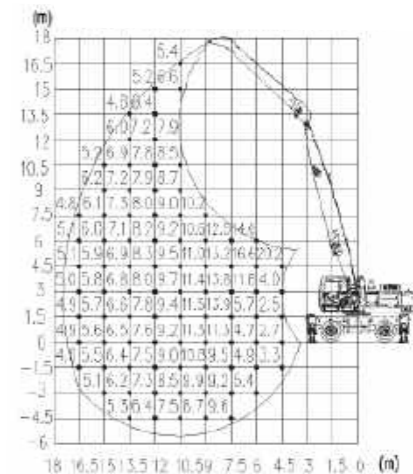


Scope Of Work

SMHW48V Lift capacities of material handler
(Boom 8.6m, Stick 6m, Unit:t)



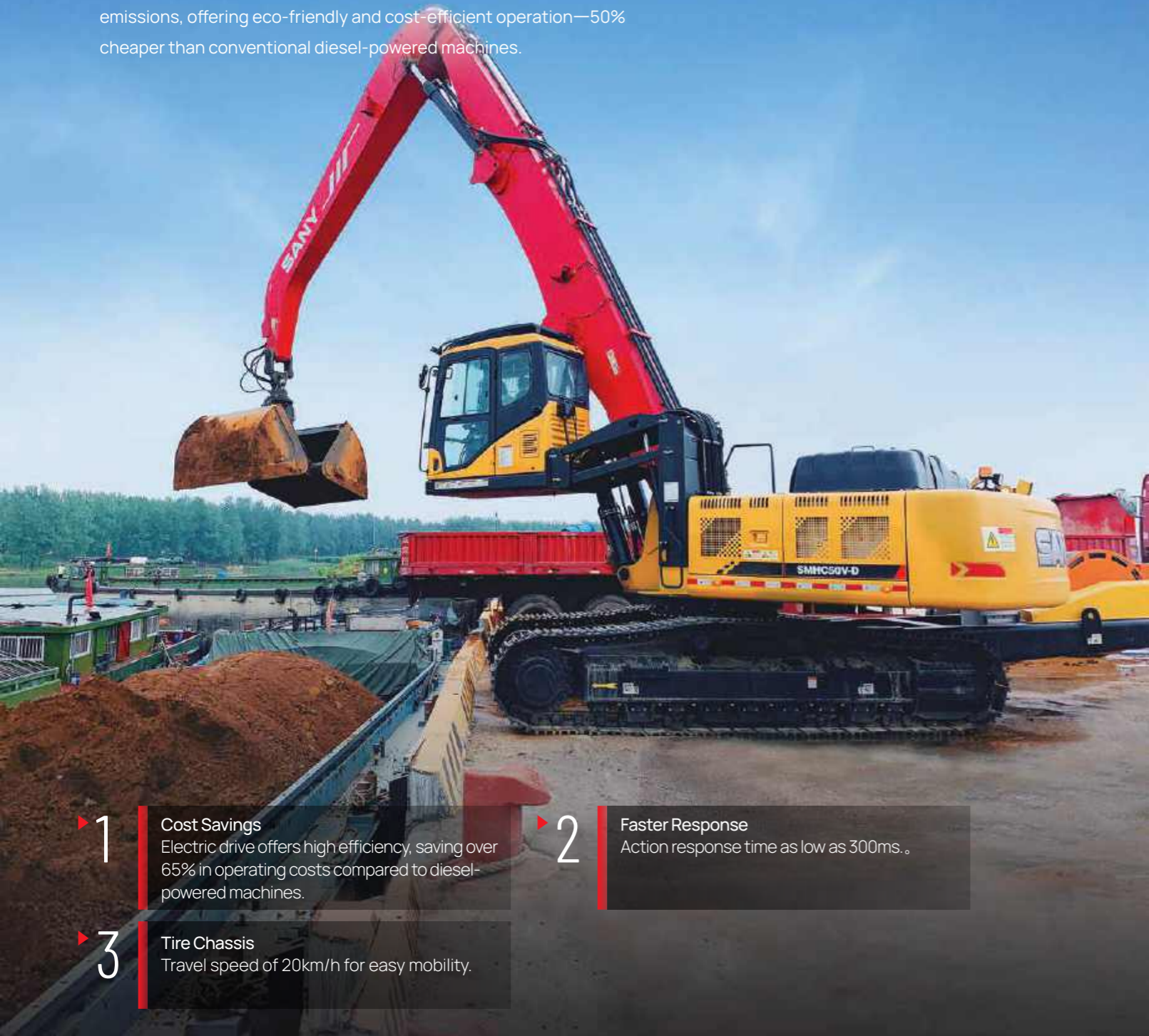
SMHW48V Lift capacities of material handler
(Boom 10.5m, Stick 7.5m, Unit:t)



SMHC50V-D

SANY Material Handling Machine

The 50V-D is a electric material handler, equipped with various grab attachments, suitable for handling bulk cargo at inland terminals and scrap steel unloading at steel mills. It is motor-driven, with zero emissions, offering eco-friendly and cost-efficient operation—50% cheaper than conventional diesel-powered machines.



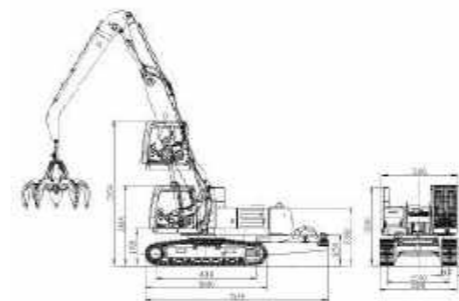
- ▶ **1** **Cost Savings**
Electric drive offers high efficiency, saving over 65% in operating costs compared to diesel-powered machines.
- ▶ **3** **Tire Chassis**
Travel speed of 20km/h for easy mobility.

- ▶ **2** **Faster Response**
Action response time as low as 300ms.

▶ Product Parameters

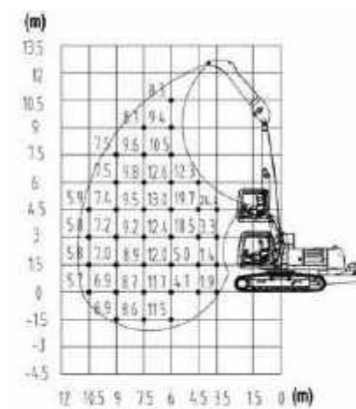
Technical Parameter				Configuration Parameter				
ITEM		UNIT	SMHC50V-D	CONFIGURATION		UNIT	SMHC50V-D	
Power System	E-Motor	Model	-	XEMC	Slewing Gear	Slewing Bearing	-	Sany
		Rated Capacity	kW/rpm	160/1480		Max. Rotating Speed	rpm	8
		Input voltage	V/Hz	380/50	Cabin	Cabin Lift Height	mm	2650
		Type Of Start	-	Soft Start		Basic Parameters	Boom Configuration	m
Traveling Gear	Working Gauge	mm	2590	m	Boom 7			Boom 8.6
	Wheel Base	mm	4140	m	Stick 4.5		Stick 6	
	Track Width	mm	600	Max. Operating Radius	m		10.5	13.5
	Max. Travelling Speed	km/h	5	Max. Operating Height	m	12	15	
Hydraulic System	Type Of Control		-	Electronically Controlled Positive Flow System	Max. Operating Depth	m	-1.5	-3
	Main Pump	Model	-	Kawasaki	Max. Operating Radius (Grab Not Included)	t	5.9	4.1
		Rated Flow	L/min	2×297				
	Reducer	-	Sany					
	Max. System pressure	MPa	32					
Hydraulic Oil Tank	L	310						

▶ Dimensions

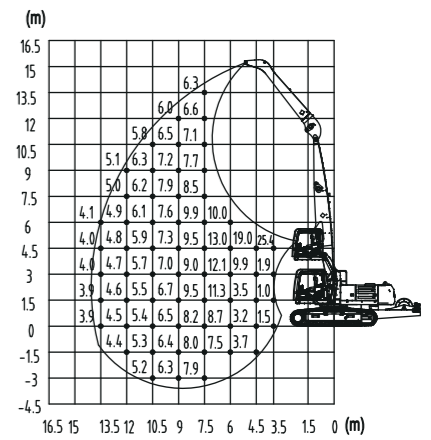


▶ Scope Of Work

SMHC50V-D Lift capacities of material handler (Boom 7m, Stick 4.5m, Unit:t)



SMHC50V-D Lift capacities of material handler (Boom 8.6m, Stick 6m, Unit:t)



SMHC70V

SANY Material Handling Machine

The SMHC70V is a dual-power material handler, primarily used for bulk material loading and unloading at inland terminals. It is equipped with a large bucket capacity shell grab and multiple boom configurations, offering a wide operating range and high efficiency for clean unloading.



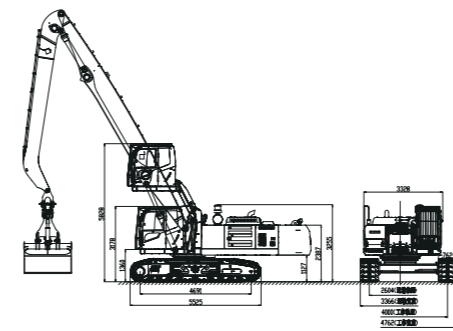
- ▶ **1 High Load Capacity**
Single cycle time of just 30 seconds, with a single grab weight of 6 tons, achieving more than twice the average efficiency of a 16-ton gantry crane, easily handling 5,000-ton vessel operations.
- ▶ **3 Superior Design**
Direct bulk material unloading and loading, no need for hoppers or auxiliary unloading machines.
- ▶ **5 User-friendly**
Hard connection for grab, simplifying positioning and operation.

- ▶ **2 Light weight**
Low dock load-bearing requirements, no need for track installation.
- ▶ **4 More Agile**
Easier grab clearance.

▶ Product Parameters

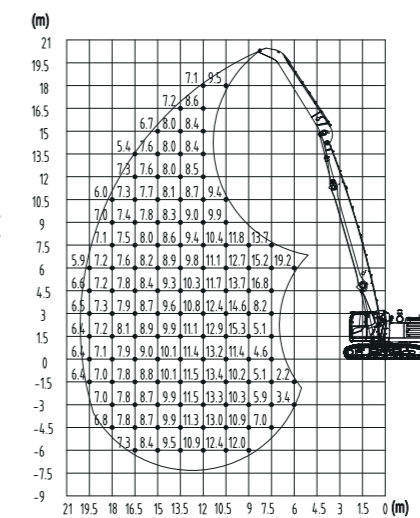
Technical Parameter				Configuration Parameter					
ITEM		UNIT	SMHC70	CONFIGURATION	UNIT	SMHC70			
Power System	Engine	Model	-	DCEC QSL8.9	Traveling Gear	Working Gauge	mm	4000	
		Rated power	kw/rpm	264/2100		Wheel Base	mm	4691	
		Torque	Nm/rpm	1900/1500		Track Width	mm	762	
		Emission	min	com III		Max. Travelling Speed	km/h	3	
		Oil Tank Capacity	L	600		Slewing Gear	Slewing Bearing	-	Sany
	E-Motor	Model	-	XEMC YE3-355M-4	Max. Rotating Speed		rpm	8	
		Rated Capacity	kW/rpm	250/1486	Cabin	Cabin Lift Height	mm	2650	
		Input voltage	V/Hz	380/ 50		Basic Parameters	Boom Configuration	m	18
	Type Of Start	-	Soft Start	m	10.5			12.5	12.5
	Hydraulic System	Type Of Control	-	Electronically Controlled Positive Flow System	m		7.5	7.5	10
Main Pump		Model	-	Engine connection pump: kawasaki E-motor connection pump: kawasaki	Max. Operating Radius		m	18	19.5
		Rated Flow	L/min	While Using Engine: 2×400 While Using E-Motor: 2×416	Max. Operating Height	m	16.5	18	19.5
Main Valve		-	Hengli	Max. Operating Depth	m	-6	-6	-9	
Reducer		-	Sany	Max. Operating Radius (Grab Not Included)	t	7.4	6.1	5.8	
Boom Cylinder		-	Sany						
Stick Cylinder		-	Sany						
Max. System Pressure		MPa	34.3						
Hydraulic Oil Tank		L	500						

▶ Dimensions

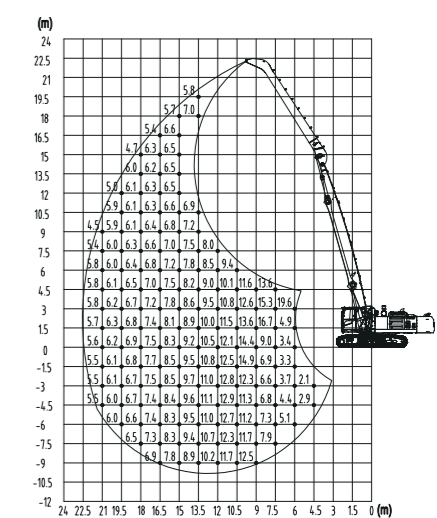


▶ Scope Of Work

SMHC70 Lift capacities of material handler (Boom 10.5m, Stick 7.5m, Unit:t)



SMHC70 Lift capacities of material handler (Boom 12.5m, Stick 10m, Unit:t)



SMHW80

SANY Material Handling Machine

The SMHW80 is a high-capacity wheeled material handler, ideal for bulk and general cargo handling at terminals and yards, with customizable booms and attachments.



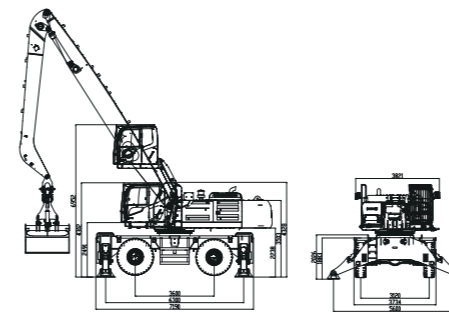
- ▶ **1 High Load Capacity**
30-second cycle time, 9-ton grab, up to 800 tons/h unloading, suitable for 10,000-ton vessels.
- ▶ **3 Low Energy Consumption**
Energy recovery tech boosts efficiency by over 20%.
- ▶ **5 Mobile**
Wheeled chassis for easy relocation.

- ▶ **2 Wide Range**
Multiple boom lengths, 13m grab depth, 23m height, 24m outreach.
- ▶ **4 Full Coverage**
12m reach, 15-ton load capacity, covers 90% of general cargo needs, compatible with various attachments.

▶ Product Parameters

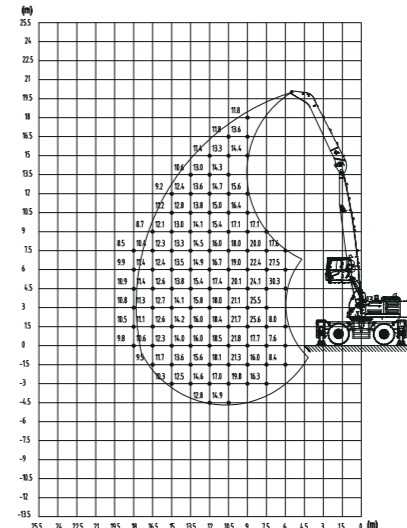
Technical Parameter				Configuration Parameter						
ITEM		UNIT	SMHW80	CONFIGURATION	UNIT	SMHW80				
Power System	Engine	Model	-	Deutz D09S4T9	Slewing Gear	Slewing Bearing	-	Sany		
		Rated power	kw/rpm	260/2000		Max. Rotating Speed	rpm	8		
		Torque	Nm/rpm	1530/1200-1400	Cabin	Cabin Lift Height	mm	2650		
		Emission	min	com III	Basic Parameters	Boom Configuration	m	18	22	24
		Oil Tank Capacity	L	600			m	Boom 10.5	Boom 12.5	Boom 13
				m			Stick 7.5	Stick 10	Stick 11	
	E-Motor	Model	-	-	Max. Operating Radius	m	18	22	24	
		Rated Capacity	kW/rpm	-	Max. Operating Height	m	18	21	23	
		Input voltage	V,Hz	-	Max. Operating Depth	m	-4.5	-7.5	-9	
		Type Of Start	-	-	Max. Operating Radius (Grab Not Included)	t	10.5	8.1	6.4	
Chassis System	Track width	mm	3120							
	Wheel base	mm	3600							
	Support width (lengthways)	mm	6300							
	Support width (crosswise)	mm	5600							
	Turning radius	mm	9800							
	Max. Gradeability	%	20							
	Max. Travelling Speed	km/h	10							
Hydraulic System	Type Of Control	-	Electronically Controlled Positive Flow System							
	Main Pump	Model	-	Hengli						
		Rated Flow	L/min	2×400						
	Main Valve	-	Hengli							
	Reducer	-	Sany							
	Boom Cylinder	-	Sany							
	Stick Cylinder	-	Sany							
	Max. System Pressure	MPa	34							
Hydraulic Oil Tank	L	500								

▶ Dimensions

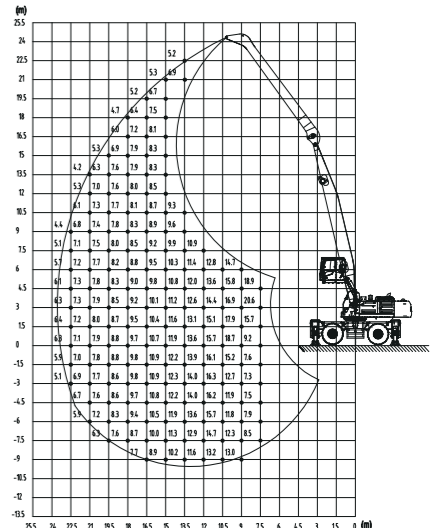


▶ Scope Of Work

SMHW80 Lift capacities of material handler (Boom10.5m, Stick7.5m, Unit:t)



SMHW80 Lift capacities of material handler (Boom13m, Stick11m, Unit:t)



SMHW30G5

SANY Material Handling Machine

30-series material handlers are mainly suitable for all kinds of bulk material handling the machine is light and flexible with stable performance and high work efficiency.

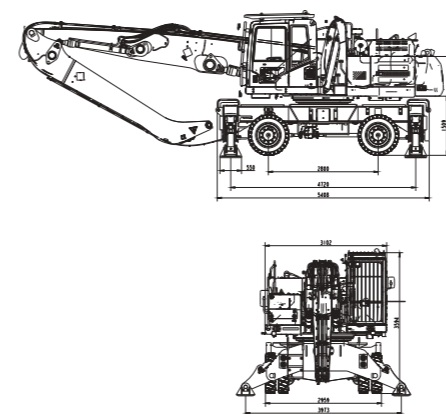


The SMHW30G5 equipped Cummins L6.7 engine (EU Stage V) with high efficiency and low consumption performance.
The SMHW30G5 with reinforced undercarriage stability and comprehensive security features.
It is comfortable to operate in scrap, timber, and waste recycling handling.

Product Parameters

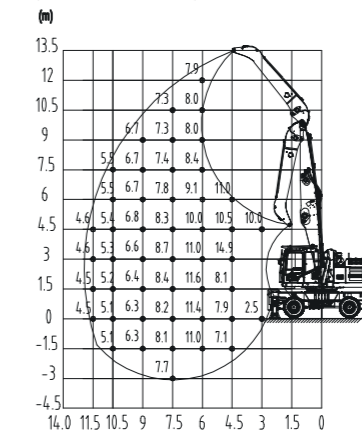
Technical Parameter				Configuration Parameter					
ITEM		UNIT	SMHW30G5	CONFIGURATION	UNIT	SMHW30G5			
Power System	Engine	Model	-	CumminsL6.7	Slewing Gear	Slewing Bearing	-	Sany	
		Rated power	kw/rpm	145/2000		Max. Rotating Speed	rpm	8	
		Torque	Nm/rpm	847/1500	Cabin	Cabin Lift Height	mm	2650	
		Emission	min	EU stage V	Basic Parameters	Boom Configuration	m	12	14
		Oil Tank Capacity	L	465			m	Boom 7.3	Boom 8.6
Chassis System	Track width	mm	2387	m	Stick 5.1	Stick 5.6			
	Wheel base	mm	2800	Max. Operating Radius	m	12	13.5		
	Support width (lengthways)	mm	4720	Max. Operating Height	m	12	13.5		
	Support width (crosswise)	mm	3973	Max. Operating Depth	m	-3	-3		
	Turning radius	mm	3146	Max. Operating Radius (Grab Not Included)	t	4.5	3.2		
	Max. Gradeability	%	35						
Ber	Max. Travelling Speed	km/h	20						
	Gearbox	-	DANA360						
	Axles	-	KESSLER						
Hydraulic System	Type Of Control	-	Electronically Controlled Positive Flow System						
	Main Pump	Model	-	Kawasaki					
		Rated Flow	L/min	2×260					
	Main Valve	-	Kawasaki						
	Reducer	-	Sany						
	Boom Cylinder	-	Sany						
	Stick Cylinder	-	Sany						
	Max. System Pressure	MPa	32						
	Hydraulic Oil Tank	L	230						

Dimensions

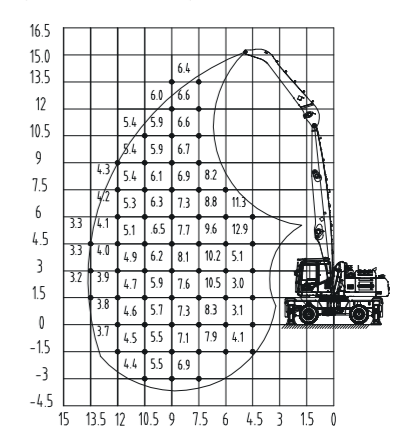


Scope Of Work

SMHW30G5 Lift capacities of material handler (Boom 7.3m, Stick 5.1m, Unit: t)



SMHW30G5 Lift capacities of material handler (Boom 8.6m, Stick 5.6m, Unit: t)



SMHW48G5

SANY Material Handling Machine

48 series is widely used in railway, inland wharf for bulk material loading and unloading, a variety of boom combination for railway bulk material, steel mills, inland wharf, general cargo and other working conditions, can offer wide range of operation and high efficiency.

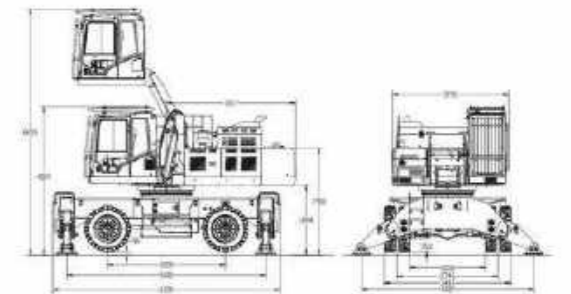


The SMHW48G5 is a versatile material handler that can be deployed wherever large quantities of material need to be moved. It's a real powerhouse that impresses on account of its high efficiency and cost effectiveness. One of its signature features is its high load capacity, which allows even the greatest of tasks to be handled swiftly. No matter whether the SMHW48G5 is deployed in a Port or a timber yard, for materials handling or for sorting tasks on a demolition site, to handle recycling material or scrap—the range of task-appropriate attachment devices guarantee the maximum in performance and reliability for any application.

Product Parameters

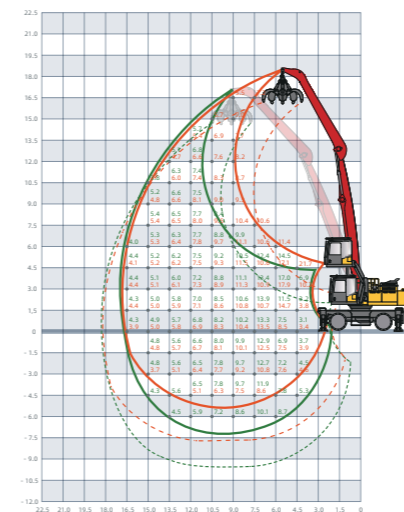
Technical Parameter				Configuration Parameter					
ITEM		UNIT	SMHW48G5	CONFIGURATION		UNIT	SMHW48G5		
Power System	Engine	Model	-	Cummins SL9	Slewing Gear	Slewing Bearing	-	Sany	
		Rated power	kw/rpm	252/1800		Max. Rotating Speed	rpm	8	
		Torque	Nm/rpm	1526/1400	Cabin	Cabin Lift Height	mm	2650	
		Emission	min	EU stage V		Boom Configuration	m	17	20
		Oil Tank Capacity	L	540			m	Boom 9.6	Boom 10.5
Chassis	Track Width	mm	2746	Basic Parameters	Max. Operating Radius	m	16.5	19.5	
	Wheel Base	mm	3200		Max. Operating Height	m	16.5	19.5	
	Support width (lengthways)	mm	5400		Max. Operating Depth	m	-6	-9	
	Support width (crosswise)	mm	4800		Max. Operating Radius (Grab Not Included)	t	3.9	3.5	
	Turning Radius	mm	8800						
	Max. Travelling Speed	km/h	20						
Hydraulic System	Type Of Control	-	Electronically Controlled Positive Flow System						
	Main Pump	Model	-	Kawasaki					
		Rated Flow	L/min	2×320					
	Main Valve	-	Kawasaki						
	Reducer	-	Sany						
	Boom Cylinder	-	Sany						
	Stick Cylinder	-	Sany						
	Max. System Pressure	MPa	32						
Hydraulic Oil Tank	L	340							

Dimensions

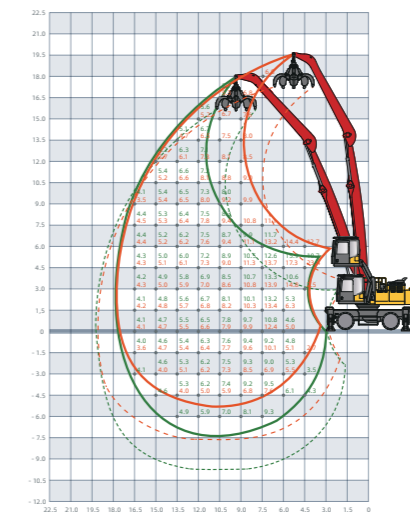


Scope Of Work

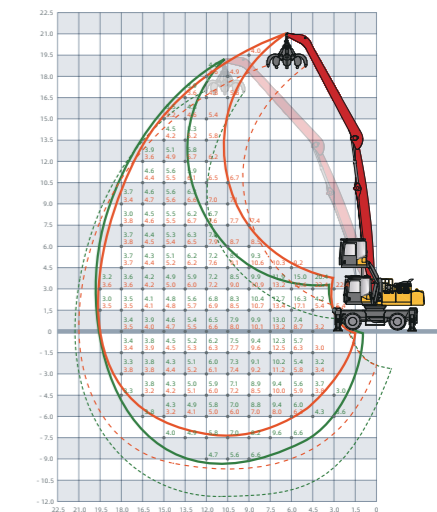
SMHW48G5 Lift capacities of material handler (Boom 9.6m, Stick 7.5m, Unit:t)



SMHW48G5 Lift capacities of material handler (Boom 10.5m, Stick 7.5m, Unit:t)



SMHW48G5 Lift capacities of material handler (Boom 10.5m, Stick 9.5m, Unit:t)



SMHC160

SANY Material Handling Machine

The SMHC160 is a 100-ton crawler material handler, ideal for railway and large terminal operations. It features optional gantry or track chassis, a heavy-duty shell grab, and multiple boom configurations for wide-ranging, high-efficiency tasks.

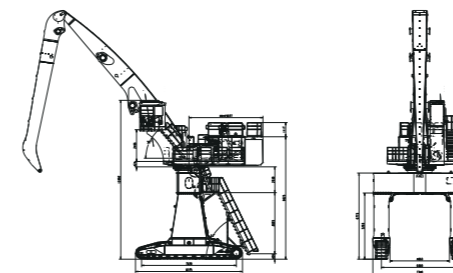


- ▶ **1 High Efficiency**
13t load at 24m reach, 30s 90° swing cycle, efficiency >800t/h.
- ▶ **2 Wide Range**
Optional K22 and K26 boom configurations.
- ▶ **3 Energy-saving**
Energy recovery system saves 20%, fuel consumption 60-80L/h.
- ▶ **4 Versatile**
Gantry crawler chassis, 40% incline capability.
- ▶ **5 Reliable**
Includes automatic fire suppression, grab hydraulic filtration, and 4-channel video monitoring.

▶ Product Parameters

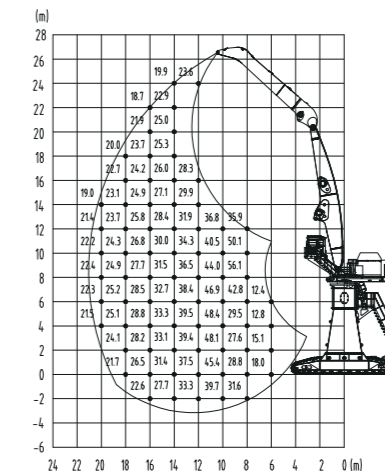
Configuration Parameter				Configuration Parameter			
ITEM		UNIT	SMHC160	CONFIGURATION		UNIT	SMHC160
Power System	Engine	Model	-	Deutz D09S3T9A*2			
		Rated power	kw/rpm	2*235/2000			
		Torque	Nm/rpm	2*1450/1200~1400			
		Emission	min	Stage III /CN-4			
		Oil Tank Capacity	L	600			
Chassis	Track Width	mm	6000				
	Wheel Base	mm	7420				
	Support width (lengthways)	mm	8375				
	Support width (crosswise)	mm	7340				
	Turning Radius	mm	/				
	Max. Travelling Speed	km/h	3				
Hydraulic System	Type Of Control	-	Fully electronically controlled positive flow system				
	Main Pump	Model	-	Kawasaki K5V212DPH1N6R-OE81-V			
		Rated Flow	L/min	1450			
	Slewing motor	-	Kawasaki M5X250CHB-10A-15A/275-RG27D25E				
	Boom Cylinder	-	ZTE				
	Arm cylinder	-	ZTE				
	Maximum system pressure	MPa	35				
	Hydraulic oil tank	L	1100				
Slewing Gear	Slewing Bearing	-	SOT				
	Max. Rotating Speed	rpm	5				
Cabin	Cabin Lift Height	m	Fixed height increase2.3				
	Boom Configuration	m	22	26			
		m	Boom 12	Boom 14.5			
Basic Parameters		m	Stick 10	Stick 12			
	Max. Operating Radius (Excluding spreader)	m	20	24			
	Max. Operating Height (Excluding spreader)	m	26	30			
	Max. Operating Depth (Excluding spreader)	m	-3	-7			
	Max. Operating Radius (Grab Not Included)	t	21	13			

▶ Dimensions

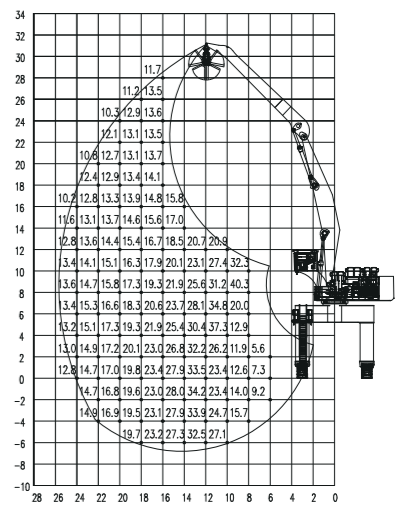


▶ Scope Of Work

SMHC160 Lift capacities of material handler (Boom12m, Stick10m, Unit:t)



SMHC160 Lift capacities of material handler (Boom 14.5m, Stick12m, Unit:t)



SMHC100

SANY Material Handling Machine

The SMHC100 is a 100-ton crawler material handler, ideal for bulk and general cargo handling at terminals and yards, featuring versatile boom and grab configurations.

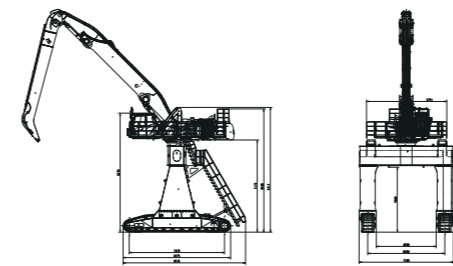


- ▶ **1** **High Load Capacity**
30s cycle time, 9t grab, 800t/h unloading, suitable for 10,000-ton vessels.
- ▶ **2** **Wide Reach**
13m depth, 23m height, 24m radius with multiple boom options.
- ▶ **3** **Low Energy Consumption**
20% energy savings via energy recovery system and AMESim 3D simulation.
- ▶ **4** **Versatile**
15t load at 12m reach, covering 90% of general cargo needs, with various attachments.
- ▶ **5** **Mobility**
Gantry chassis for railcar operations.

▶ Product Parameters

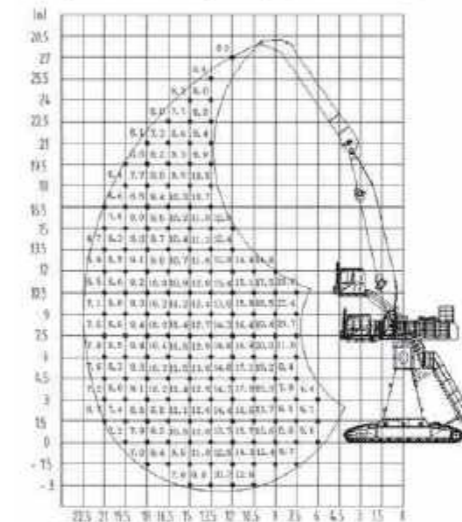
Technical Parameter				Configuration Parameter						
ITEM		UNIT	SMHC100	CONFIGURATION		UNIT	SMHC100			
Power System	Engine	Model	-	Cummins SL9	Traveling Gear	Working Gauge	mm	6000		
		Rated power	kw/rpm	260/2000		Wheel Base	mm	7420		
		Torque	Nm/rpm	1530/1200-1400		TrackWidth	mm	950		
		Emission	min	com III		Max.Travelling Speed	km/h	3		
		Oil Tank Capacity	L	600		Slewing Gear	Slewing Bearing	-	Sany	
	Model	-	-	Max. Rotating Speed	rpm		8			
	E-Motor	Rated Capacity	kW/rpm	-	Cabin	Cabin Lift Height	mm	3200		
		Input voltage	V/Hz	-		Basic Parameters	Boom Configuration	m	18	18
		TypeOf Start	-	-	m			Boom	Boom	Boom
				m	10.5			12.5	14.5	
Hydraulic System	Type Of Control		-	Electronically Controlled Positive Flow System	Max. Operating Radius	m	18	22	24	
	Main Pump	Model	-	Hengli		Max. Operating Height	m	24	27	29
		Rated Flow	L/min	2×400	Max. Operating Depth		m	0	-3	-5
	Main Valve		-	Hengli		Max. Operating Radius (Grab Not Included)	t	9.0	7.5	5.0
	Reducer		-	Sany						
	Boom Cylinder		-	Sany						
	Stick Cylinder		-	Sany						
	Max. System Pressure	MPa	34							
	Hydraulic Oil Tank	L	500							

▶ Dimensions



▶ Scope Of Work

SMHC100 Lift capacities of material handler (Boom10.5m, Stick7.5m, Unit:t)



▶ Attachments

▶ Orange-peel grab

Technical Parameter		
Capacity(m³)	0.8m³	1m³
Self-weight(kg)	1902	1952
Self weight without rotator(kg)	1675	1725
Width when expanded(mm)	2550	2933
Width when closed(mm)	1625	1822
Height with rotator(kg)	3093	3286
Height without rotator(kg)	2829	3022
Working pressure(Mpa)	25	25



▶ Timber grab

Technical Parameter	
Looping area(m²)	Parameter
Self weight with rotator(kg)	2211
Looping area when expanded(mm)	3251
Looping area when closed(mm)	1638
Height/length(mm)	4028/810
Working pressure(Mpa)	28



▶ Clamshell grab

Technical Parameter					
Capacity(m³)	2.0m³	2.5m³	3.5m³	4.0m³	5.0m³
Self-weight(kg)	2216	2404	2566	2752	2924
Self weight without rotator(kg)	1888	2090	2243	2318	2795
Length(mm)	1500	1602	1804	2000	2000
Width expanded(mm)	2470	2865	3112	2918	3228
Width closed(mm)	2218	2298	2668	2696	2595
Height with rotator(kg)	3270	3468	3597	3652	3629
Height without rotator(kg)	3006	3204	3333	3234	3458
Working pressure(Mpa)	28	28	28	28	28



▶ Steel tube grab

Technical Parameter	
Item	Parameter
Rated load(t)	8
Max. Rotate speed(r/min)	10
Rated working pressure(MPa)	25
Stretch Itinerary(mm)	single side 1420
Lateral distance(mm)	left 360/right 360
Steel tube length(m)	6-8.5
Spreader self weight(t)	2.5



▶ Pulp grab

Technical Parameter	
Item	Parameter
Rated load(t)	6
Max. Rotate speed(r/min)	10
Movable hook open/close time(s)	< 1
Rated working pressure(mpa)	25
Spreader length(mm)	2600
Spreader width(mm)	1300
Spreader height(mm)	2150
Hook distance range(mm)	840 -2000
Spreader self weight(t)	1.5



▶ Generator system

Technical Parameter	
Item	WM5-110L WM5-130L WM5-160L
Rate of power kW	25
Electromagnet	
Item	ZKZL-19E-D
Shape(mm)	520×350×750 (dimension)
Output rate of work(kW)	25
Input voltage(V)	AC380
Output voltage(V)	DC220
Protection level	IP45 (suitable for outdoor use)
Magnetization & demagnetization time	≤3s

Control cabinet			
Item	WM5-110L	WM5-130L	WM5-160L
Rated voltage(DC)	220V	220V	220V
Input rate of power(kW)	8.14	13.4	17.8
Diameter (m)	1.1	1.3	1.6
Self weight (kg)	around 1310	around 2100	around 3050
Cold current (a)	37	60.9	81
Protection level	IP67	IP67	IP67
Insulation level	H level	H level	H level
Cast iron mold(kg)	800	1100	2300
Cutting bits (kg)	800	1100	2300
No.1 Steel scalp(kg)	400	600	1100
No.2 Steel scrap(kg)	100	200	400
Type of connection	chain	chain	chain
Electromagnet outlet	YC2×10	YC2×16	YC2×16



Engine



Hydraulic motor



Control cabinet



Magnetic plate

► Construction Cases



► Construction Cases (Inland Port)



► Construction Cases (Rail Yard)



► Construction Cases (Breakbulk Cargo)



36T Wheeled Material Handler



45T Crawler Material Handler



45T Log Material Handler



48T Wheeled Material Handler



48T Pulp Material Handler





Sany Marine

SANY Industrial Park, Gaolan Port Economic and Development Zone, Zhuhai, Guangdong, China

Tel: +86-756-7266963 Service: +86-4008-87-8318 <https://www.sanyglobal.com>

Considering the continuous progress and update of SANY Marine technology, the technical parameters and configuration of products are modified and adjusted at any time, so this brochure is for reference only. The appearance, configuration and technical parameters of the specific model are subject to the actual model sold.

— 2025 —



<https://www.linkedin.com/company/sany-port-machinery/>

www.youtube.com/@SANY_Marine