

Reliable and durable

- ◆ It is designed based on the simulation of mining load spectrum and has passed the verification of extreme mining working conditions, ensuring no cracking, no looseness and no oil leakage.
- ◆ The mining rear axle is equipped with a NO-SPIN automatic differential lock, which is easy to operate. Reinforced slewing bearing, wheel hub and chain, with service life increased by 50%.
- ◆ The front axle adopts an enlarged wheel side bearing and a labyrinth seal design, which increases the load-bearing capacity by 20%, making it more adaptable to wading working conditions in rainy areas.
- ◆ The fully sealed roller disc working device is resistant to sand and gravel, requires no clearance adjustment, and has no easily-worn parts. The circle drive with 19,000N · m overload protection effectively reduces the impact of sudden loads on structural components.

Convenient Maintenance

- ◆ The fully sealed rolling disc implement has no easily-worn parts, making it more adaptable to harsh working conditions. The maintenance cycle is 250 hours or 1 month.
- ◆ The engine compartment has a large opening degree, making it easy to reach for the replacement of the engine's three filters and hydraulic filter elements.
- ◆ The electrical components are centrally arranged at the entrance of the cab, making it convenient for engine fault diagnosis and replacement of relays and fuses.
- ◆ The intelligent cloud system features self-diagnosis of faults and self-reminders for maintenance, enabling users to have a clear understanding of the equipment's operating status.

C10S Series



SANY HEAVY INDUSTRY CO., LTD.

Sany Industrial City, Changsha Economic and Technological Development Zone, Hunan Province, China
Zip: 410100
Fax: 0086-731-85835199 Enquiry and Complaint Telephone: 0086-4006098318

Warm reminder:
As the technology is constantly updated, technical parameters and configurations are subject to change without prior notice.
The machine on the picture may include additional equipment, this album is for reference only, subject to the actual.
The copyright belongs to SANY Heavy Industry, and no part of this catalog may be reproduced or copied for any purpose without SANY Heavy Industry's written permission.

© China print Apr. 2025 edition



Scan the QR code to follow
the WeChat Official Account of
SANY Road Machinery

V.20250409

SANY[®]



SPECIFICATION



Grader STG230C-10S Stage II

QUALITY CHANGES THE WORLD

www.sanyglobal.com

Product Highlights

Optimal control experience

- ◆ **Extreme vision:** The ROPS/FOPS hexahedral all-glass sealed cab is more suitable for dusty working conditions. The blade movement is clearly visible, and the noise level next to the driver's ear is 76 decibels.
- ◆ **Precise control:** The load sensitive hydraulic system allows for fast blade movement and has excellent micro-motion performance. The light steering system enables easy and precise leveling operations.
- ◆ **Comfortable driving:** The wide-back mine shock-absorbing seat with headrest provides maximum support for long hours of driving. There is a 7-inch LCD touch screen, membrane keys, a reversing camera, and 7 languages to choose from freely.

Efficient Operation

- ◆ The optimal matching power transmission system realizes the best matching of traction and vehicle speed, with the operation efficiency 10% higher than that of similar products in the industry.
- ◆ The four-bar linkage swing frame has an operating range of 7.1m and a blade lifting cylinder span of 1.63m. It ensures smooth and efficient earth-moving operations. The blade lifting height is 505mm, allowing for easy loading onto and unloading from trailers.
- ◆ Compared with similar products in the industry, the cylinder speed is 30% higher and the blade rotation speed is 20% higher.



STG230C-10S

Grader
C10S Series

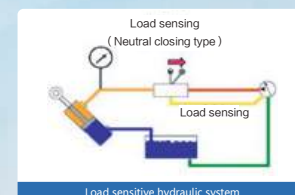
3rd generation reinforced slewing bearing/drive axle

- ◆ Reinforced double-seal maintenance-free slewing bearing (patented), with a maintenance period of > 1000h;
- ◆ Extended wheel-hub bearing, waterwheel lubrication structure (patent), reinforced chain and NO-SPIN silent differential lock increase the service life by 50%.



Load sensing hydraulic system

- ◆ The hydraulic flow is dynamically matched with the load change. The effective stroke of the multi-way valve is >50%, ensuring precise control. The joystick operating force is <25N, making the operation effortless.



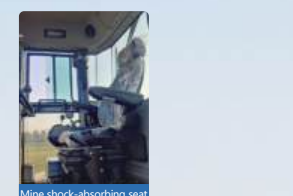
Rolling disc heavy-duty operating device

- ◆ The fully-enclosed rolling disc operating device adapts to sand and gravel, with high slewing accuracy. It has a grease filling cycle of 250h or 1 month, without wearing parts, and its service life is > 10000h.
- ◆ The four-bar linkage swing frame has a wide operating range of 7.1m and a shovel lifting height of 505mm, allowing for easy loading onto and unloading from plate trailers.



Quiet and comfortable driving

- ◆ The 3rd generation of 76dB(A) ultimate-vision ROPS/FOPS hexahedron cab, with 360° non-blind-area design and optimal sealing performance in the industry, minimizes dust entry and provides a quiet comfortable driving environment.
- ◆ The imported mining-type shock-absorbing seat features a mechanical suspension structure. With a spacious and comfortable backrest, it provides maximum support during long drives and reduces the feeling of fatigue;
- ◆ Luxury interior, left and right push windows, radio, cab fan, USB charging, storage box, etc.



3rd generation intelligent display and control system

- ◆ 7-inch touch screen, integrated reversing camera are available in seven languages: Chinese, Russian, English, French, Spanish, Portuguese and Indonesian.
- ◆ Intelligent cloud system, real-time monitoring of complete machine status, intuitive and automatic prompt for fault self-diagnosis and regular maintenance.



Product Optional

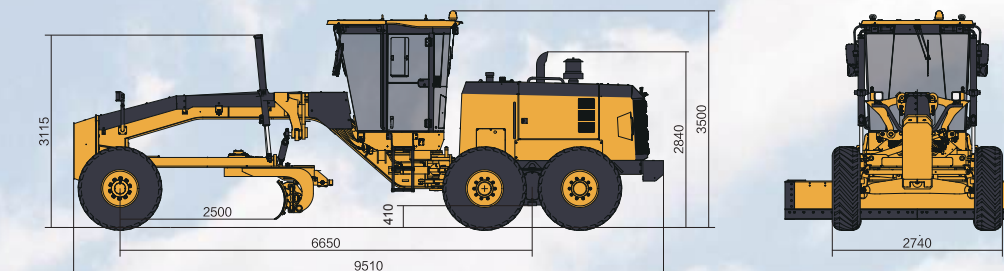
Category	Optional/additional	Application scenario
Optional installation of drive axle	Wet-braked rear axle	Operations in mines and on roads of mountainous area
Optional installation of work implement	Front bulldozer	Large-volume loose material traction
	Rear ripper (5 large teeth)	Crushing and loosening of hard soil
	Front scarifier (11 teeth)	Loosening before leveling the farmland roads
	Mid-mounted scarifier (11 teeth)	Loosening before leveling the farmland roads
Blade & intelligent optional installation	12/14-foot blade	Adapt to different road and site widths
	Blade floating system	Ice and snow removal, and mine road maintenance
Tires & accessories	Auto-leveling system	Fine leveling of roads and sites
	17.5 diagonal tire with herringbone pattern	Sandy land and farmland
	17.5 radial tire with block pattern	Multiple working conditions of mine and crushed stone
Air filter	Tire mudguard	Snow removal and safety requirements
	Oil-bath air filter	Desert and mine
Low-temperature start optional installation	Engine intake preheating system + normal temperature battery	Environment with temperature range from 0°C to -10°C
	Engine intake preheating and low temperature battery (-29°C)	Environment with temperature range from -10°C to -20°C
	Coolant, fuel, oil circuit, filter element heating and low-temperature battery (-40°C)	Environment with temperature range from 20°C to 40°C

Notes:
1. Standard operating mass includes standard configuration of 17.5-25 tires, full load fuel, coolant, lubricant and 75kg operator.
2. Due to the continuous update of technology and products, parameters are subject to modification without notice. In case of any discrepancy between samples and physical objects, the physical object shall prevail.

Product Parameters

Overall Dimensions

All dimensions are approximate and overall dimensions vary depending on the service condition of the device.



Unit: mm

Item	STG230C-10S
Engine	DONGFENG CUMMINS 6CTAA8.3 Stage II
Rated power/speed (kW/rpm)	179/2200
Dimensions (mm)	Standard configuration: including front and rear counterweights
	Addition: rear ripper
	Addition: front dozer + rear ripper
Operating mass (kg)	Standard configuration: including front and rear counterweights
	Addition: rear ripper
	Addition: front dozer + rear ripper
Forward speed (km/h)	6/10/13/21/27/42
Reverse speed (km/h)	6/13/27
Blade length × chord height (mm)	4270×620 (standard)
Maximum lifting height of blade (mm)	505
Fuel tank volume (L)	400
Hydraulic tank volume (L)	140

