

SMHC70

SANY Material Handling Machine

The SMHC70V is a dual-power material handler, primarily used for bulk material loading and unloading at inland terminals. It is equipped with a large bucket capacity shell grab and multiple boom configurations, offering a wide operating range and high efficiency for clean unloading.



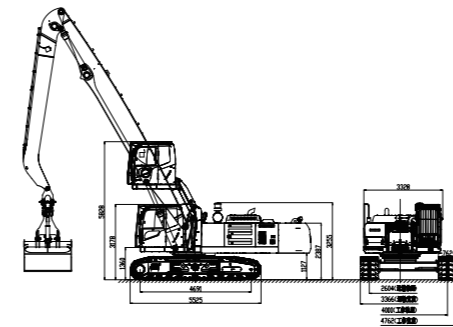
- ▶ **1 High Load Capacity**
Single cycle time of just 30 seconds, with a single grab weight of 6 tons, achieving more than twice the average efficiency of a 16-ton gantry crane, easily handling 5,000-ton vessel operations.
- ▶ **3 Superior Design**
Direct bulk material unloading and loading, no need for hoppers or auxiliary unloading machines.
- ▶ **5 User-friendly**
Hard connection for grab, simplifying positioning and operation.

- ▶ **2 Light weight**
Low dock load-bearing requirements, no need for track installation.
- ▶ **4 More Agile**
Easier grab clearance.

▶ Product Parameters

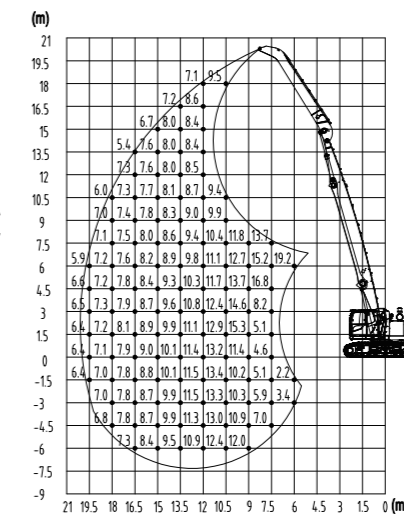
Technical Parameter				Configuration Parameter							
ITEM		UNIT	SMHC70	CONFIGURATION	UNIT	SMHC70					
Power System	Engine	Model	-	DCEC QSL8.9	Traveling Gear	Working Gauge	mm	4000			
		Rated power	kw/rpm	264/2100		Wheel Base	mm	4691			
		Torque	Nm/rpm	1900/1500		Track Width	mm	762			
		Emission	min	com III		Max. Travelling Speed	km/h	3			
		Oil Tank Capacity	L	600	Slewing Gear	Slewing Bearing	-	Sany			
	E-Motor	Model	-	XEMC YE3-355M-4		Max. Rotating Speed	rpm	8			
		Rated Capacity	kW/rpm	250/1486	Cabin	Cabin Lift Height	mm	2650			
		Input voltage	V/Hz	380/ 50		Basic Parameters	Boom Configuration	m	18	20	22
		Type Of Start	-	Soft Start				m	Boom 10.5	Boom 12.5	Boom 12.5
		Hydraulic System	Type Of Control	-	Electronically Controlled Positive Flow System		m	Stick 7.5	Stick 7.5	Stick 10	
Main Pump	Model		-	Engine connection pump: kawasaki E-motor connection pump: kawasaki	Max. Operating Radius		m	18	19.5	21	
	Rated Flow		L/min	While Using Engine: 2×400 While Using E-Motor: 2×416	Max. Operating Height	m	16.5	18	19.5		
Main Valve	-		Hengli	Max. Operating Depth	m	-6	-6	-9			
Reducer	-		Sany	Max. Operating Radius (Grab Not Included)	t	7.4	6.1	5.8			
Boom Cylinder	-		Sany								
Stick Cylinder	-		Sany								
Max. System Pressure	MPa		34.3								
Hydraulic Oil Tank	L		500								

▶ Dimensions



▶ Scope of Work

SMHC70 Lift capacities of material handler (Boom 10.5m, Stick 7.5m, Unit:t)



SMHC70 Lift capacities of material handler (Boom 12.5m, Stick 10m, Unit:t)

