

# Mobile Crushing and Recycling Equipment

## SANY CONSTRUCTION TECHNOLOGY CO.LTD.

SANY Industry Park, Economic-Technological Development Area, Changsha City, Hunan Province, China  
Tel.: 400 010 3311 After Sale Service: 400887 8318 Web: www.spcteam.com

As the technology is updated constantly, the technical parameters are subject to change without prior notice. The machines on the picture may include auxiliary equipment. All rights are reserved by Sany Construction Technology Co., Ltd. The content of any part of this directory shall not be reproduced or copied for any purpose.



Turning stones into gold, building and enjoying a green future

# High efficiency and energy saving, making crushing more economical

## High yield

It can produce 300 tons of concrete grade aggregates per hour

- Intelligent feeding
- Ultra-large screening and conveying
- Crusher unit direct drive

## Low energy consumption

Fuel consumption 20% lower than that in the industry under the same working conditions

- Power direct drive system
- Electromechanically driven crushing and production
- Walking/working power separation system
- System adaptive energy saving mode

## High reliability

continuous production under full load with no process failures

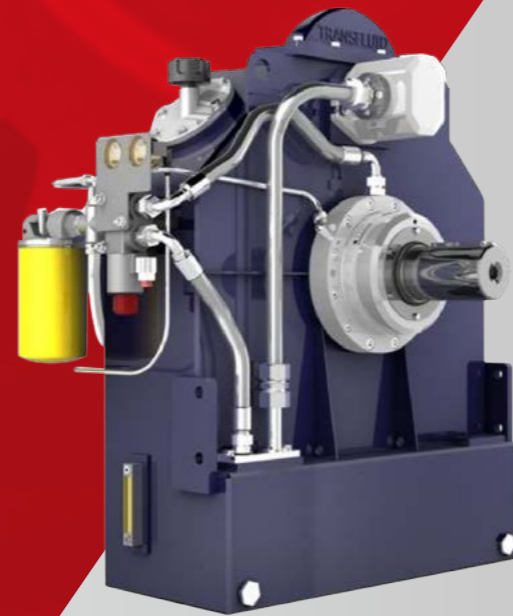
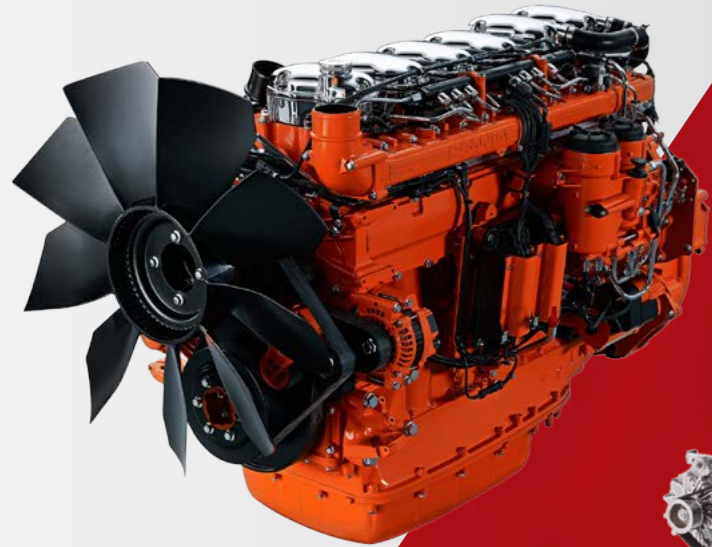
- Imported core components
- Super wear-resistant parts
- High-strength endurance test under all working conditions



# 5 major technologies

## Power technology

Power direct drive system  
Reliable conveying  
high conveying efficiency



Imported engine and hydraulic coupling

## Crushing technology

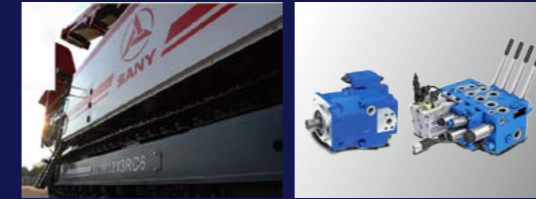
- High precision rotor system
- Safety for maintenance
- Intelligent anti-blockage
- Adaptive adjustment of aggregates

## Traveling technology

- Excavator chassis
- Wireless remote control/stepless speed regulation
- Micro-movement

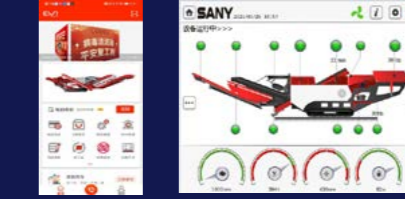
## Control technology

- Excavator control platform
- Sany Customer Cloud Service
- Simple operation



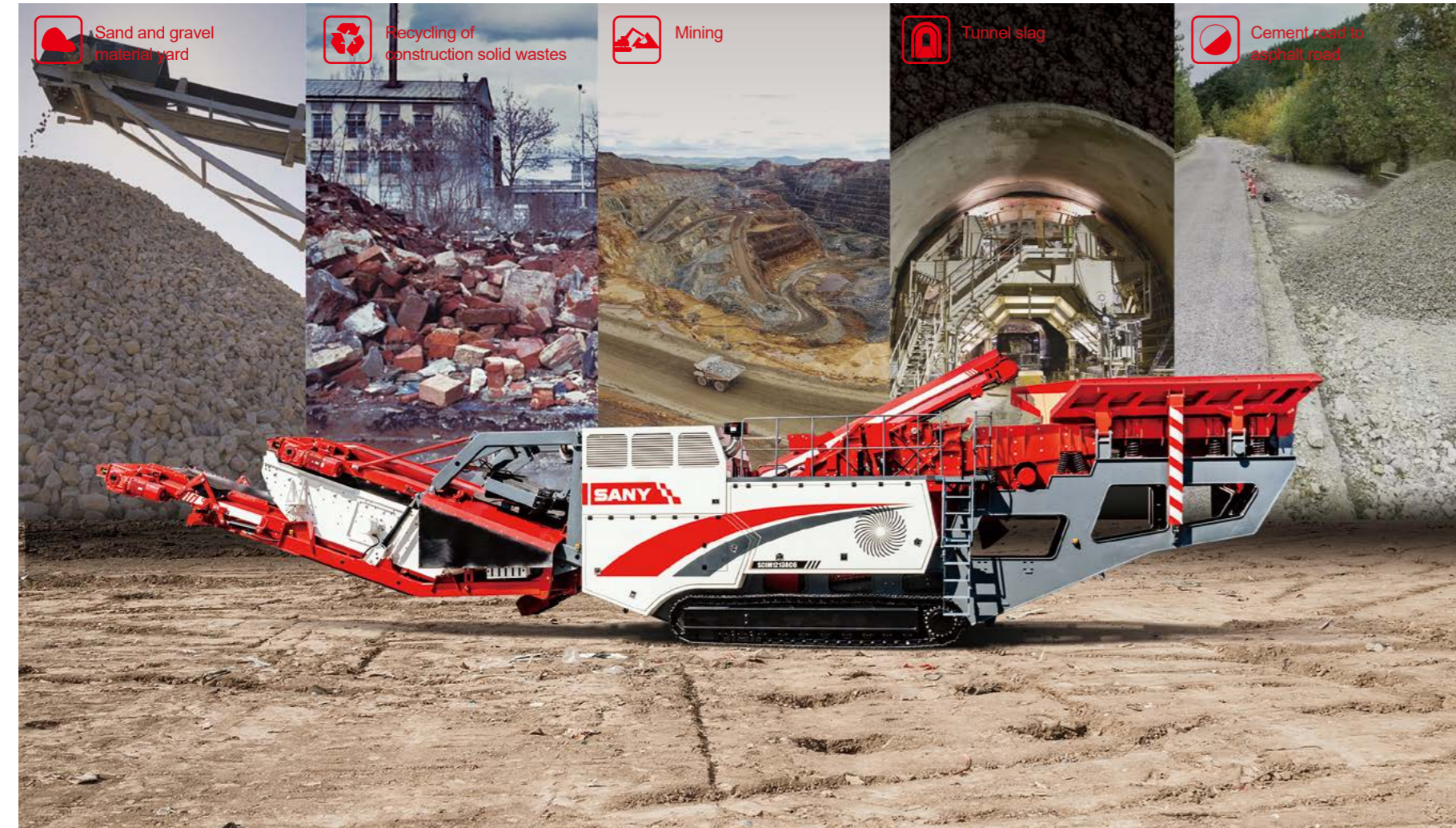
## Hydraulic technology

- Imported hydraulic components
- Smooth operation
- High safety and reliability



## Sany Mobile Impact Crusher

### Application scenario



### Limit for Use

**Raw materials** hard materials for mining, transportation, railway, cement, building material, metallurgy, construction and other industries  
 (compressive strength  $\leq$  150 MPa, diameter  $\leq$  600 mm)

**Medium hardness natural rocks**  
 (limestone, bluestone, slate, and others)

**Recycled materials**  
 (solid construction waste, solid concrete component waste, solid cement pavement waste, and others)

**Natural end material**

The mixture is produced through the mobile impact crushing, and four kinds of finished aggregates are obtained through the mobile screening plant (the gradation is adjusted according to the screen)

Sany Mobile Impact Crusher  
 A bluestone crushing and screening site (the proportion is the reference value)

0-5 (30%)	5-10 (25%)	10-20 (25%)	20-31.5 (20%)
-----------	------------	-------------	---------------

**Recycled end material**

The mixture is produced through the mobile impact crushing as raw material for brick making, pavement cushion or water stabilized material.

Sany Mobile Impact Crusher  
 A crushing and screening site of construction waste (concrete blocks)

## Sany Mobile Impact Crusher

### Product parameters

No.	Main parameters	Unit	SCIM1213RC6	SCIM1213RC6E	Remarks
<b>Feeding System</b>					
1	Nominal volume of receiving hopper	m3	6	6	Standard configuration
	Maximum feeding size	mm	600	600	
	Maximum feeding capacity	t/h	450	350	Depending on material
	Prescreen layers	Layer	2	2	Heavy duty, innovative mesh
<b>Power System</b>					
2	Brand		Scania/Volvo	ISUZU/SANY	
	Emission standard		Tier 3	Tier 3	
	Rated power	kW/rpm	371/1800	73/2000	Maximum power of the machine
<b>Crushing System</b>					
3	Throughput Potential	t/h	150-450	150-350	Depending on material
	Rotor size (diameter×width)	mm	φ1200×1300	φ1200×1300	
	Discharge grain size	mm	20-100	20-100	Hydraulic adjustment of discharge port size
<b>Running System</b>					
4	Rated Power	kW	55	55	
	Traveling speed (high/low)	km/h	1/0.3	1/0.3	Maximum speed on flat ground/climbing
	Maximum climbing capacity	/	7°	7°	Maximum climbing angle 15° without the secondary screening system
	Crawler wheel tread× left and right center distance	mm	4100×2600	4100×2600	Sany excavator crawler chassis
<b>Operation Mode</b>					
5	Operation screen	/	Touch screen	Touch screen	
	Remote control	/	Wired/wireless	Wired/wireless	With display screen
	Remote online upgrading	/	Provided	Provided	Including online service, online fault diagnosis
<b>Transport Dimensions</b>					
6	Length*width*height	mm	21800×3250×3850	21800×3250×3850	Including secondary screening system
	Transport weight	Ton	63	58	Including secondary screening system

### functional components configuration

Model	SCIM1213RC6 & SCIM1213RC6E Mobile Impact Crusher
Basic Module	Complete crushing machine (engine, impact crusher unit, receiving hopper, feeder, main belt, magnetic separator, Pre-screening belt conveyor and others)
Detachable Module	Secondary screening system (Secondary screening unit, Secondary screening belt conveyor, Transition belt conveyor, Recirculation belt conveyor)

### key parts configuration

No.	Item	SCIM1213RC6			SCIM1213RC6E		
		Type	Manufacturer	Qty	Type	Manufacturer	Qty
1	Engine	13L	SCANIA ( Sweden )	1	GB3-4JJ1X-73-2000	ISUZU(Japan)	1
2	Hydraulic coupling	KPTO	TRANSFLUID(Italy)	1	MVE series	OLI-WOLONG ( Italy )	2
3	Alternator	ECP34	MECCALTE (Italy)	1	A10 series	Rexroth(Germany)	1
4	Timing belt	14MGT	GATES(America)	1	MSF-180	KYB ( Japan )	2
5	Vibration motor	MVE series	OLI-WOLONG(Italy)	2	GT80T90	SANY	2
6	Traveling pump	A11 series	REXROTH(Germany)	1	SI1213RC6E.7	SANY	1
7	Motor	MSF-180	KYB (Japan)	2	SEH Ccontroller	SANY	1
8	Reduction gear	GT80T90	SANY	2	-	-	-
9	Crusher host	SI1213RC6.7	SANY	1	-	-	-

# SCSM1860 SANY Mobile Screening Plant



## Diesel-electricity Hybrid

With imported generator sets; the plant can be powered with diesel oil or mains supply according to the working conditions; with strong power and energy conservation

## Efficient Screening

A three-layer large screen with an effective screening area of 10.8m<sup>2</sup> on a single layer is mounted to implement efficient screening

## Screening Drive

The double side plates are driven by motors, which is stable, reliable and simple in maintenance.

## Intelligent Operation Control

With intelligent touch screen as control panel and Button Start function, the operation becomes simpler

## Intelligent Traveling

Excavator chassis, wireless remote control and infinitely adjustable speed

## Hydraulic Lifting

The vibrating screen, main belt conveyor and fine material belt conveyor can be hydraulically lifted, providing enough space to change the screen

## Flexible Combination

The plant can be reasonably combined with mobile impact crushing plant, mobile cone crushing plant and other mobile crushing equipment, and the screen can be configured as required to create maximum value for customers



## SANY Mobile Screening Plant

# Specifications

No.	Specifications	Unit	Value /Description	Remarks
<b>Overall Parameters</b>				
1	Maximum Treatment Capacity	t/h	300	-
	Overall weight	t	33.5	-
	Length × Width × Height (Transportation)	mm	15500 × 3600 × 3800	-
<b>Screening System</b>				
2	Number of Screen Layers	Layer	3	-
	Length × Width	mm	1800 × 6000	-
	Power	KW	2 × 7	-
<b>Main Conveyor Belt</b>				
3	Belt width	mm	1200	-
	Power	KW	11	-
<b>Transfer Conveyo</b>				
4	Belt width	mm	500	-
	Power	KW	3	-
<b>Oversized Material Conveyor</b>				
5	Belt width	mm	650	-
	Stacking Height	mm	3100-3500	-
	Power	KW	5.5	-
<b>Large Material Conveyor</b>				
6	Belt width	mm	650	Including final screening system
	Stacking Height	mm	3500	
	Power	KW	5.5	

No.	Specifications	Unit	Value /Description	Remarks
<b>Medium Material Conveyor</b>				
7	Belt width	mm	650	-
	Stacking Height	mm	3500	-
	Power	KW	5.5	-
<b>Fine Material Conveyor</b>				
8	Belt width	mm	1200	-
	Stacking Height	mm	3700	-
	Power	KW	7.5	-
<b>Power system</b>				
9	Generator Set	KW	80	Diesel-electricity Hybrid
	Brand	-	Volvo	-
<b>Traveling system</b>				
10	Power	KW	37	
	Traveling speed (high/low)	Km/h	0.9/0.4	
	Maximum Permissible Gradient	Degree	9°	
	Track Tread × Distance between Left and Right Centers	mm	3850 × 2500	SANY Excavator Crawler Chassis
<b>Operating mode</b>				
11	Operation Screen	-	Touch screen	
	Remote controller	-	Wired/Wireless	
	Remote Upgrade	Online	Equipped	Including online service, online diagnosis and online program upgrade



industrialisation of construction



三一重工  
MANUFACTURING BUILDING 18

SANY

