



SCIM1213RC6

Sany 300t Mobile Impact Crusher



SANY CONSTRUCTION TECHNOLOGY CO.LTD.

SANY Industry Park, Economic-Technological Development Area, Changsha City, Hunan Province, China
Tel.: 400 010 3311 After Sale Service: 400887 8318 Web: www.spcteam.com

As the technology is updated constantly, the technical parameters are subject to change without prior notice. The machines on the picture may include auxiliary equipment. All rights are reserved by Sany Construction Technology Co., Ltd. The content of any part of this directory shall not be reproduced or copied for any purpose.

Turning stones into gold, building and enjoying a green future

SCIM1213RC6

Sany Mobile Impact Crusher

Quality Changes the World

High efficiency and energy saving, making crushing more economical

High yield

It can produce 300 tons of concrete grade aggregates per hour

- Intelligent feeding
- Ultra-large screening and conveying
- Crusher unit direct drive

Low energy consumption

Fuel consumption 20% lower than that in the industry under the same working conditions

- Power direct drive system
- Electromechanically driven crushing and production
- Walking/working power separation system
- System adaptive energy saving mode

High reliability

continuous production under full load with no process failures

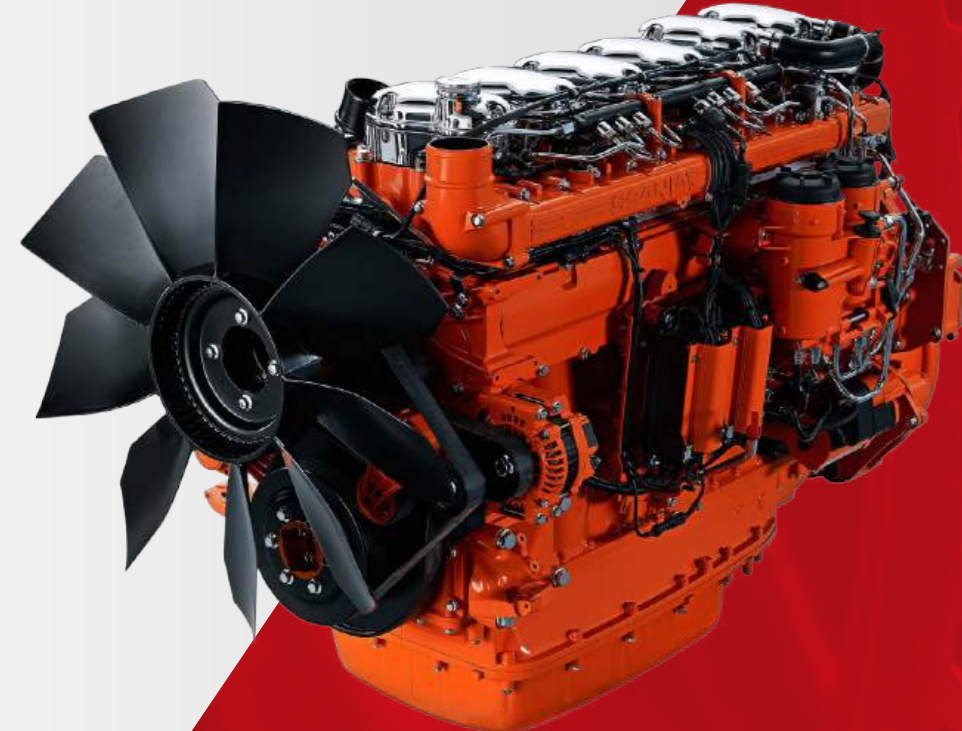
- Imported core components
- Super wear-resistant parts
- High-strength endurance test under all working conditions



5 major technologies

Power technology

Power direct drive system
Reliable conveying
high conveying efficiency



Sweden SCANIA diesel engine



Italian fluid coupling

Crushing technology

- High precision rotor system
- Safety for maintenance
- Intelligent anti-blockage
- Adaptive adjustment of aggregates

Traveling technology

- Excavator chassis
- Wireless remote control/stepless speed regulation
- Micro-movement

Control technology

- Excavator control platform
- Sany Customer Cloud Service
- Simple operation

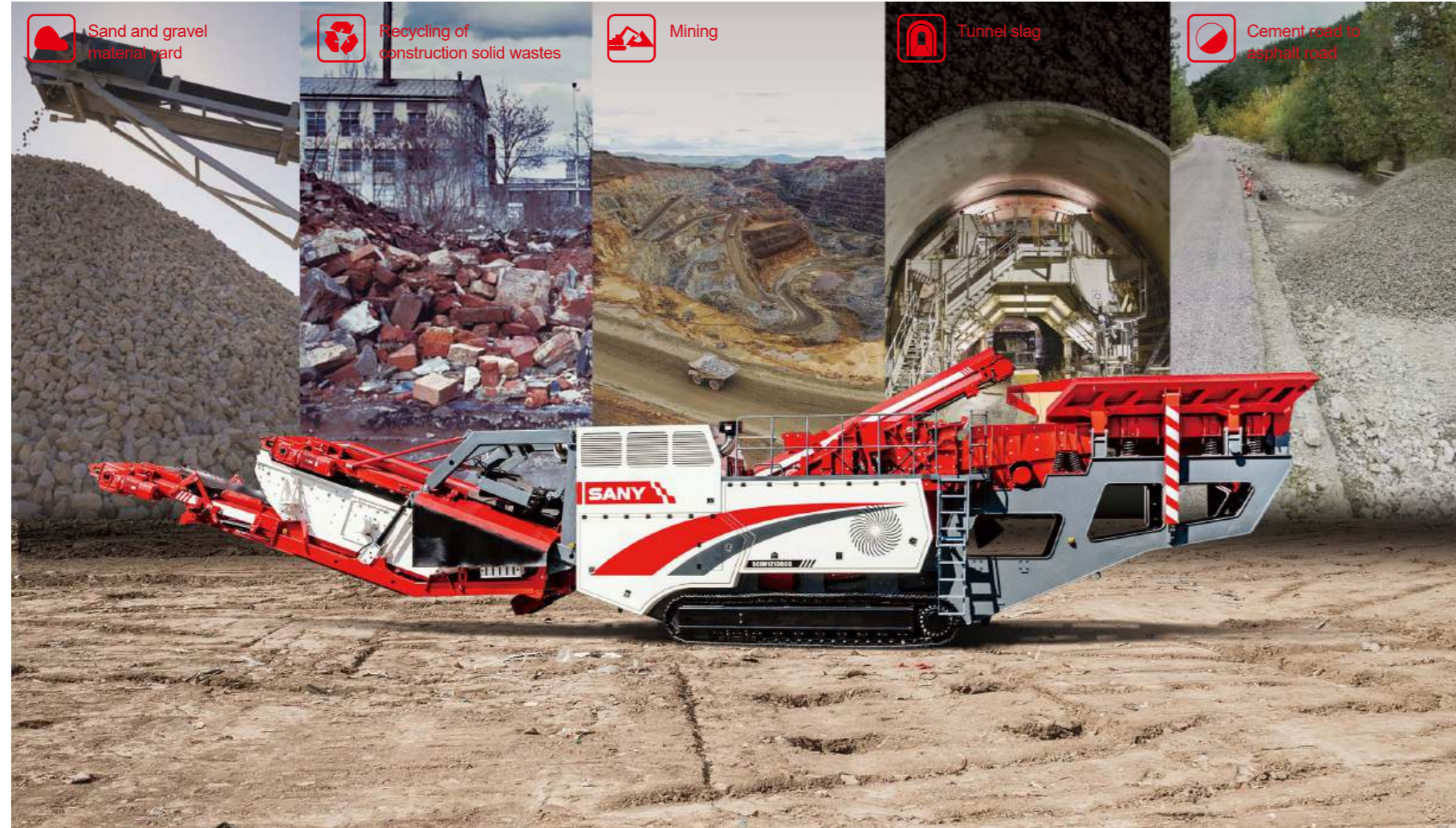


Hydraulic technology

- Imported hydraulic components
- Smooth operation
- High safety and reliability



Application scenario



Product parameters

No.	Main parameters	Unit	Value	Remarks
Feeding System				
1	Nominal volume of receiving hopper	m3	6	Standard configuration
	Maximum feeding size	mm	600	
	Maximum feeding capacity	t/h	400	Depending on material
	Prescreen layers	Layer	2	Heavy duty, innovative mesh
Power System				
2	Brand		Scania/Volvo	
	Emission standard		Tier 3	
	Rated power	kW/rpm	371/1800	Maximum power of the machine
Crushing System				
3	Processing capacity	t/h	150-300	Depending on material
	Rotor size (diameter×width)	mm	φ1200×1300	
	Discharge grain size	mm	20-100	Hydraulic adjustment of discharge port size
Running System				
4	Rated Power	kW	55	
	Traveling speed (high/low)	km/h	1/0.3	Maximum speed on flat ground/climbing
	Maximum climbing capacity	/	7°	Maximum climbing angle 15° without the secondary screening system
	Crawler wheel tread× left and right center distance	mm	4100×2600	Sany excavator crawler chassis
Operation Mode				
5	Operation screen	/	Touch screen	
	Remote control	/	Wired/wireless	With display screen
	Remote online upgrading	/	Provided	Including online service, online fault diagnosis
Transport Dimensions				
6	Length*width*height	mm	21800×3250×3850	Including secondary screening system
	Transport weight	Ton	63	Including secondary screening system

SCIM1213RC6
Sany Mobile Impact Crusher

functional components configuration

Model	"SCIM1213RC6 Mobile Impact Crusher"
Basic Module	Complete crushing machine (engine, impact crusher unit, receiving hopper, feeder, main belt, magnetic separator, Pre-screening belt conveyor and others)
Detachable Module	Secondary screening system (Secondary screening unit, Secondary screening belt conveyor, Transition belt conveyor, Recirculation belt conveyor)

key parts configuration

No.	Item	Type	Manufacturer	Qty
1	Engine	13L	SCANIA (Sweden)	1
2	Hydraulic coupling	KPTO	TRANSFLUID(Italy)	1
3	Alternator	ECP34	MECCALTE (Italy)	1
4	Timing belt	14MGT	GATES(America)	1
5	Vibration motor	MVE series	OLI-WOLONG(Italy)	2
6	Traveling pump	A11 series	REXROTH(Germany)	1
7	Motor	MSF-180	KYB (Japan)	2
8	Reduction gear	GT80T90	SANY	2
9	Crusher host	SI1213RC6.7	SANY	1
10	Electronic control system	SEHC controller	SANY	1

Quality Changes the World



industrialisation of construction

SCIM1213RC6
Sany Mobile Impact Crusher

Quality Changes the World

