



# DUMP TRUCK



PLEASE SUBSCRIBE TO  
CONSTRUCTION CHINA



三一工程车辆事业部  
SANY ENGINEERING VEHICLE BU

Address: SANY Industry Town, Economic and Technological Development Zone, Changsha, Hunan, China

Zip code: 410100

Website: <http://www.sanygroup.com.cn>

Sales Hotline

Tel: 0086-731-85935199 Mail: [sales@sanyglobal.com](mailto:sales@sanyglobal.com)

Service or Complaints

Tel: 0086-400099318 Mail: [CRD@sany.com.cn](mailto:CRD@sany.com.cn)

The name of product configuration including Sany and Sany Group's trademark, logo, name and so on the product is reserved.  
Sany Heavy Industry is registered with the State Administration for Industrial Property (SAIP) in the People's Republic of China on May 20, 2013.  
Sany Heavy Industry is registered with the Overseas Product Trademark Administration (OPTA) in the People's Republic of China on May 20, 2013.  
Sany and the SANY logo are trademarks or registered trademarks of Sany Heavy Industry Co., Ltd. in the People's Republic of China and other countries without written approval of the company.

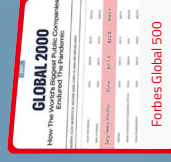
## SANY INTRODUCTION

SANY was founded in 1989;  
 Group assets: **\$78** billion;  
 Construction machinery manufacturing rank:  
 CHINA **NO.1** and WORLD **NO.2**;  
**3** listed companies in the group;  
**10,146** international authorized patents, **13,140** patent applications, and **219** breakthrough key technologies;  
 More than **54000** employees all around the world.

## DUMP TRUCK OF SANY ENGINEERING VEHICLE INSTITUTE

Sany started the international tipper business in 2018, and the international sales volume reached 1,868 units in 2022, which is the fastest growth rate in the industry.

## SANY HONOR



### WORLDWIDE TOP SUPPLIERS

Set high requirements on suppliers and expect to provide high quality products and services.



### THE RIGHT TRUCK FOR THE RIGHT APPLICATION

For different scenarios such as urban construction and mining, we provide a wide variety of configurations to perfectly match our customers' various requirements.

- Engines: 340-490hp, Euro2/3/5
- Transmission: 10/12 gears, MT/AMT
- Rear axle: I= 4.77/5.26/5.92/6.73
- Main frame: 316x90, x(8+8) / (8+8+4)
- Suspension Front: 11/13 tons
- Suspension Rear: 22/26 tons
- Body/Clty/Mine: L/Rectangle;
- GVM: 55-78tons



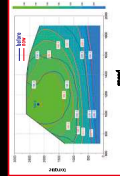
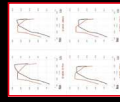
### FOCUS ON CUSTOMER PROFITABILITY

#### INCOME EXTRA 10%

- Horse power range covers **380~490HP**, maximum torque **2200N·m**, strong climb ability, travel fast, more economical;
- Power upgrade, great unstuck capability and gradeability, overloading without worries;
- Simulation calculation and road spectrum acquisition improves vehicle performance.

#### COST SAVINGS UP TO 10%

- **Double vortex combustion chamber** reduce fuel consumption;
- **Optimized CAM axis** the camshaft profile design with intake valve closing early and exhaust valve opening early achieve the trade-off between optimal fuel consumption and emission;
- **Economic zone speed**, expand **40%** to save fuel;
- **Active breathing system, oil and gas separator**, free of maintenance;
- **High transmission efficiency** optimal matching, to ensure that the actual conditions of the customer vehicle commonly used speed in the economic range.



### ROBUST DESIGN

Sany takes into full consideration of the possible rough work condition in harsh environment of the dump trucks, assures the reliability of the product through rigorous testing, super load bearing capacity design and keeps the vehicle in good working state at all times.

#### TOUGH ROAD TEST

- **15,000h** strict full load test on intensive road at SANY vehicle testing site.
- Over **300,000** cold area test and over **10,000km** extremely rough test in Baokang dump truck test site with full load.

#### HIGH STRENGTH SUSPENSION SYSTEM

- **310mm** height and 8mm+8mm thickness chassis frame, stronger than competitors;
- **9 tons** front axle (capacity **171 + 2x13**) rear axle (capacity **2x27**), reliable carrying capacity;
- **10 leaf springs** front suspension system and **12 leaf springs** rear suspension system. GVW ranges from **31 tonnes to 33** tonnes. Increase payload with **20%**.

#### COMPREHENSIVE PROTECTION SYSTEM

Equipped with radiator protection plate, headlight and taillight shield.

#### TRANSMISSION TORQUE REDUNDANCY (ZOE-UP) TO IMPROVE ANTI-ROUGHNESS



COLD REGION TEST



ROUGH ROAD



HEAVY LOAD UP/ROCKY HILL



WINDING TEST



SPRAY WATER BRUSH TEST

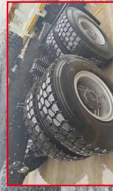
## OUTSTANDING CROSSING ABILITY

### OFFROAD WORKING OPTIMIZATION, STRONGER TRAFFICABILITY PERFORMANCE

- Approach angle  $\geq 26^\circ$ , departure angle  $\geq 34^\circ$ , minimum ground clearance  $\geq 300\text{mm}$ , chassis core components such as fuel tank, air storage, air filter height  $\geq 550\text{mm}$ , radiator  $\geq 450\text{mm}$ .
- Optional **12.00 R24** tires, higher ground clearance, better passability.
- Well protection of chassis components assures the safety under off road working condition, smaller turning radius, ensures crossing in small space.

### ANTI-STUCK CAPABILITY FOR COMPLICATED GROUND

- Standard with wheel differential lock, axial differential lock, hub-reduction driving axle;
- Optional: Acceleration Slip Regulation (**ASR**) system, improve the drive performance of slippery road conditions.



## COMFORTABLE DRIVING

Through ergonomic optimization design, it is convenient for the driver to operate.

- Multifunctional steering wheel
- Cruise (above Euro II)-optional
- LCD screen -optional
- Electric window lifts
- Electric rearview mirror -optional
- Air suspension seat
- Sleeper and storage space
- Air conditioning/independent heater(optional for cold area)
- Pneumatic Gear Shift Assistance

## SAFETY FIRST

Efficient braking system and safety assistance, to ensure the safe operation of drivers and vehicles.

### RELIABLE BRAKING SYSTEM

- Rated pressure **12bar**
- **KNORR** parts
- Match **engine braking** technology for Euro 3 and above models;
- **Bimetal** brake drum.

### DRIVING SAFETY

- No dead angle view mirror, optional **ESP** view
- Standard with **ABS**
- Optional **ASR**
- Optional **LOW SPEED**
- Optional **TPS/BATS**



## RELIABLE AND DURABLE SUPERSTRUCTURE

Chassis mounted integration, a variety of container specifications, suitable for different working conditions.

- City construction and mining applications
- A wide selection of materials and thicknesses
- Special superstructure for large stones
- U shape/rectangle
- Four flip/six lift is stable and reliable
- Straight tail door/diagonal tail door
- Long life: high strength materials/robot welding/powder spraying technology









## RUSSIA

### STRONG POWER AND FAST CLIMBING SPEED

460 horsepower, great climbing ability in highway and mine transportation application. Extra tip every day for better profit.

### MORE LOADING, MORE DURABLE

9.5T front axle, 16T rear axle, 316 height, 8 + 8 double layer frame, T55 balance suspension, four turn stronger bearing capacity, high strength wear resistant steel. The tail gate is also strengthened for better superstructure.

### EXTREMELY SAFE AND SECURE

Reliability test is carried out in various working conditions, which ensures the normal operation of vehicles for a long life cycle.  
Cdr area package configuration ensures more reliable operation under low temperature environments. Metal frame structure and white body guarantees personal safety.



Russia Dump truck configuration and work condition recommendation 64	
Product Model	SVZ200-6500 (Main Spring) Dump Engine Standard Model n=526 Others n=526 ZZ20000271
Dimension (LxWxH)(mm)	8800x2400x3160
Wheel Base(mm)	4000+1400
Curb Weight(kg)	16500
Economic Speed Range (Maximum Gear)	50-60
Rated Maximum Speed: 500rpm	37.50
Maximum Minimum Speed: 2200rpm	71
27mm Shock absorber (1000mm)	●
Shock absorber (1000mm)	●
U-type Cargo	○
Cab Model	○
Others	318 cab, Standard box with single bed 318 cab, Standard box with single bed Remote key, Central lock, Electric glass lifting 318 cab, Standard box with single bed 318 cab, Standard box with single bed
Engine	Mitsuba Rated power (kW/rpm) Maximum torque (N·m/rpm) Cylinder Gearbox
Front axle	Type Others
Drive axle	Type Differential lock Others
Chassis	Frame Type Front suspension Rear suspension Brakes Fuel tank Battery
Cabin configuration	Tyres heating, Air heating, Hot (preheating) (cold start) LCD multimedia screen (radio) Multi-functional steering wheel 360 view Integral rearview mirror (body) Integral rearview mirror (body)
Optional	Ignition key (integrated body)
Apply to	Applicable (Some Recommended)
Notes	Typical mine road (not clear) transportation mine site Typical road (not paved, partially compact) domestic paved road (accounts for a small proportion in total of road conditions) General load speed Full load 10-20km/h (off-highway) Maximum speed to typical domestic or 70km/h

Russia Dump truck configuration and work condition recommendation 64			
Standard Model Others	SVZ200-6500 (Main Spring) Dump Engine Standard Model n=526 Others n=526 ZZ20000271	Luxury Model Others	SVZ200-6500 (Main Spring) Dump Engine Standard Model n=526 Others n=526 ZZ20000271
Dimension (LxWxH)(mm)	8800x2400x3160	Dimension (LxWxH)(mm)	8800x2400x3160
Wheel Base(mm)	4000+1400	Wheel Base(mm)	4000+1400
Curb Weight(kg)	16500	Curb Weight(kg)	16500
Economic Speed Range (Maximum Gear)	50-60	Economic Speed Range (Maximum Gear)	50-60
Rated Maximum Speed: 500rpm	37.50	Rated Maximum Speed: 500rpm	37.50
Maximum Minimum Speed: 2200rpm	71	Maximum Minimum Speed: 2200rpm	71
27mm Shock absorber (1000mm)	●	27mm Shock absorber (1000mm)	●
Shock absorber (1000mm)	●	Shock absorber (1000mm)	●
U-type Cargo	○	U-type Cargo	○
Cab Model	○	Cab Model	○
Others	318 cab, Standard box with single bed 318 cab, Standard box with single bed Remote key, Central lock, Electric glass lifting 318 cab, Standard box with single bed 318 cab, Standard box with single bed	Others	318 cab, Standard box with single bed 318 cab, Standard box with single bed Remote key, Central lock, Electric glass lifting 318 cab, Standard box with single bed 318 cab, Standard box with single bed
Engine	Mitsuba Rated power (kW/rpm) Maximum torque (N·m/rpm) Cylinder Gearbox	Engine	Mitsuba Rated power (kW/rpm) Maximum torque (N·m/rpm) Cylinder Gearbox
Front axle	Type Others	Front axle	Type Others
Drive axle	Type Differential lock Others	Drive axle	Type Differential lock Others
Chassis	Frame Type Front suspension Rear suspension Brakes Fuel tank Battery	Chassis	Frame Type Front suspension Rear suspension Brakes Fuel tank Battery
Cabin configuration	Tyres heating, Air heating, Hot (preheating) (cold start) LCD multimedia screen (radio) Multi-functional steering wheel 360 view Integral rearview mirror (body) Integral rearview mirror (body)	Cabin configuration	Tyres heating, Air heating, Hot (preheating) (cold start) LCD multimedia screen (radio) Multi-functional steering wheel 360 view Integral rearview mirror (body) Integral rearview mirror (body)
Optional	Ignition key (integrated body)	Optional	Ignition key (integrated body)
Apply to	Applicable (Some Recommended)	Apply to	Applicable (Some Recommended)
Notes	Typical mine road (not clear) transportation mine site Typical road (not paved, partially compact) domestic paved road (accounts for a small proportion in total of road conditions) General load speed Full load 10-20km/h (off-highway) Maximum speed to typical domestic or 70km/h	Notes	Typical mine road (not clear) transportation mine site Typical road (not paved, partially compact) domestic paved road (accounts for a small proportion in total of road conditions) General load speed Full load 10-20km/h (off-highway) Maximum speed to typical domestic or 70km/h

RUSSIA

STRONG POWER AND FAST CLIMBING SPEED

460 horsepower, great climbing ability in highway and mine transportation application, Extra trip every day for better profit.

MORE LOADING, MORE DURABLE

9.5T front axle, 18T rear axle, 316 height, B = 8 double layer frame, T55 balance suspension, four turn stronger bearing capacity, high strength wear resistant steel, The ball joint is also strengthened for better superstructure resistance.

EXTREMELY SAFE AND SECURE

Reliability test is carried out in various working conditions, which ensures the normal operation of vehicles for a long life cycle, Cdf area package configuration ensures more reliable operation under low temperature environment, Metal frame structure and white body guarantee personal safety.



Table with 4 columns: Type, Standard Model, Overhaul transmission, and Vehicle parameters. Rows include Drive shaft, Wheel base mm, Cabin, Body, Chassis parts, and optional configurations.

Table with 4 columns: Standard Model, Overhaul transmission, Vehicle parameters, and Vehicle parameters. Rows include Drive shaft, Wheel base mm, Cabin, Body, Chassis parts, and optional configurations.

## SAUDI ARABIA/MIDDLE EAST

### STRONG POWER AND BETTER DRIVE EXPERIENCE

Higher horse power engine offers up to 430 horse power, higher efficiency powertrain with strong load capability gives you confidence to overcome tough work conditions everywhere. Comfortable 316 cabin offers better experience for drivers.

### ROBUST DESIGN WITH HIGH DURABILITY IN HARSH ENVIRONMENT

Run well in 50°C higher environment with heavy payload, air intake filter designed for working in dusty areas. Sufficient tests and scientific simulations ensure its reliable and trustworthy quality.

### INTELLIGENT AND SAFE

MachineLink Terminal allows operators to monitor truck's state and location in real time. This helps operators to improve drive habit in order to reduce fuel consumption. The truck's GPS location can be tracked by managers, which helps to trace the truck's journey or set geofences. Result in safe operation of the trucks.



Product Model		Standard Model (With Wash condition)	Optional Model (City Wash Condition)
Vehicle parameter	Dimension LxWxH(mm)	8500x2540x3580	8500x2540x3580
	Wheel base(mm)	4000/1000	4000/1000
	Full Load Weight(t)	50000	50000
	Economic Speed (km/h)	30-56	48-74
	Rated Maximum Speed (km/h)	71	91
Cargo	Removable Maximum Speed (km/h)	82	105 (limited to city software)
	Rated Maximum Speed (km/h)	82	82
	Rated Maximum Speed (km/h)	82	82
Cabin	U-Type	○	○
	Others	○	○
Chassis parameter	Model	Y030A200-30 (100hp Euro II, 10338U)	
	Rated power (kW/mm)	2241/1500	
	Maximum torque (N·m/mm)	1800/1100-1500	
	Available Brake	Estimate Brake	
	Transmission	10J52J00T-61 Gear Ratio 12.5:1 7.7:1 12.520/24/34/42 Gear Ratio 12.1/4.78	
	Front axle	AB5 waterproof axle	
	Drive axle	2x4.6T / 4x2.36	
	Type	Differential lock between axles and differential lock between shafts	
	Frame	316-620/2.5 ● 12.050/0 ○	
	Rear suspension	610kg high strength steel frame (800-850kg 316x48-B)	
Front suspension	10 inch spring with shock absorber		
Steering	12 inch spring		
ABS/EBD	Phonix/ESC ● 302L (optional)		
Optional	Battery	2x172 / 6.5Ah	
	(CD) multimedia screen (16" capacity)	○	○
	Headlamp and lights protection	○	○
Applicable Score (Recommend)	Typical mine short message transportation, mine stripping, paved road, high speed drive needs compact formatted paved road accounts for a small proportion	Typical mine short message transportation, mine stripping, paved road, high speed drive needs compact formatted paved road accounts for a small proportion	Typical mine short message transportation, mine stripping, paved road, high speed drive needs compact formatted paved road accounts for a small proportion
	General used speed (km/h)	Full load 30-30km/h (offroad), Empty load 50 (offroad), 70 (highway)	General used speed (km/h)
Note X - does not apply, ○ - Optional (Basic Context) ● - Standard. The above configuration parameters are for reference. The manufacturer reserves the right to interpret them as per notice.	Typical mine short message transportation, mine stripping, paved road, high speed drive needs compact formatted paved road accounts for a small proportion	Typical mine short message transportation, mine stripping, paved road, high speed drive needs compact formatted paved road accounts for a small proportion	Typical mine short message transportation, mine stripping, paved road, high speed drive needs compact formatted paved road accounts for a small proportion
	General used speed (km/h)	Full load 30-30km/h (offroad), Empty load 50 (offroad), 70 (highway)	General used speed (km/h)

Product Model		Standard Model (With Wash condition)	Optional Model (City Wash Condition)
Vehicle parameter	Dimension LxWxH(mm)	8500x2540x3580	8500x2540x3580
	Wheel base(mm)	4000/1000	4000/1000
	Full Load Weight(t)	50000	50000
	Economic Speed (km/h)	30-56	48-74
	Rated Maximum Speed (km/h)	71	91
Cargo	Removable Maximum Speed (km/h)	82	105 (limited to city software)
	Rated Maximum Speed (km/h)	82	82
	Rated Maximum Speed (km/h)	82	82
Cabin	U-Type	○	○
	Others	○	○
Chassis parameter	Model	Y030A200-30 (100hp Euro II, 10338U)	
	Rated power (kW/mm)	2241/1500	
	Maximum torque (N·m/mm)	1800/1100-1500	
	Available Brake	Estimate Brake	
	Transmission	10J52J00T-61 Gear Ratio 12.5:1 7.7:1 12.520/24/34/42 Gear Ratio 12.1/4.78	
	Front axle	AB5 waterproof axle	
	Drive axle	2x4.6T / 4x2.36	
	Type	Differential lock between axles and shafts	
	Frame	316-620/2.5 ● 12.050/0 ○	
	Rear suspension	610kg high strength steel frame (800-850kg 316x48-B)	
Front suspension	10 inch spring with shock absorber		
Steering	12 inch spring		
ABS/EBD	Phonix/ESC ● 302L (optional)		
Optional	Battery	2x172 / 6.5Ah	
	(CD) multimedia screen (16" capacity)	○	○
	Headlamp and lights protection	○	○
Applicable Score (Recommend)	Typical mine short message transportation, mine stripping, paved road, high speed drive needs compact formatted paved road accounts for a small proportion	Typical mine short message transportation, mine stripping, paved road, high speed drive needs compact formatted paved road accounts for a small proportion	Typical mine short message transportation, mine stripping, paved road, high speed drive needs compact formatted paved road accounts for a small proportion
	General used speed (km/h)	Full load 30-30km/h (offroad), Empty load 50 (offroad), 70 (highway)	General used speed (km/h)
Note X - does not apply, ○ - Optional (Basic Context) ● - Standard. The above configuration parameters are for reference. The manufacturer reserves the right to interpret them as per notice.	Typical mine short message transportation, mine stripping, paved road, high speed drive needs compact formatted paved road accounts for a small proportion	Typical mine short message transportation, mine stripping, paved road, high speed drive needs compact formatted paved road accounts for a small proportion	Typical mine short message transportation, mine stripping, paved road, high speed drive needs compact formatted paved road accounts for a small proportion
	General used speed (km/h)	Full load 30-30km/h (offroad), Empty load 50 (offroad), 70 (highway)	General used speed (km/h)

## AFRICA

### STRONG POWER AND BETTER DRIVE EXPERIENCE

Offers up to 400 horse power, stronger power, higher efficiency powertrain with strong load capacity gives you confidence to overcome tough work conditions everywhere. Comfortable 318 cabin offers better experience for drivers.

### ROBUST DESIGN WITH HIGH DURABILITY IN HARSH ENVIRONMENT

Air intake filter designed for working in dusty area. Reinforced 316mm height, 6mm 68mm thickness chassis frame, 155 rear suspension and reinforced 4-point tipping axle offer outstanding durability. Sufficient seats and scientific simulations ensure reliability and trustworthy quality.

### INTELLIGENT AND SAFETY

Machinetalk™ Terminal allows operators to monitor truck's state and location in real time. This helps operators to improve drive habit in order to reduce fuel consumption. The truck's GPS location can be tracked by managers, which helps to trace the truck's journey or set geofence. Result in safe operation of the trucks.



Africa Dump configuration and work condition recommendation EAF	
Product Model	Minimum load condition ZZK100000950
	Unlimited load condition By orders
Vehicle parameter	Dimension (LxWxH)(mm)
	Wheel Base(mm)
	Curb Weight(kg)
	Full Load Weight(kg)
Body Size	Dimension (LxWxH)(mm)
	Wheel Base(mm)
Cargo Type	U-Type
	Other
Cab	318 (with 155 rear suspension and reinforced 4-point tipping axle)
	Other
Engine	Rated power (kW/hp)
	Maximum torque (N/m)
Chassis	Front axle
	Drive axle
Optional	Underproduction
	Height/light load/light gear/1 mesh

Note: ○-Optional ●-Standard. The above configuration parameters are for reference. The manufacturer reserves the right to change them without prior notice. The right to interpret them is reserved by the manufacturer.

Africa Dump configuration and work condition recommendation EAF	
Product Model	Minimum load condition ZZK100000950
	Unlimited load condition By orders
Vehicle parameter	Dimension (LxWxH)(mm)
	Wheel Base(mm)
	Curb Weight(kg)
	Full Load Weight(kg)
Body Size	Dimension (LxWxH)(mm)
	Wheel Base(mm)
Cargo Type	U-Type
	Other
Cab	318 (with 155 rear suspension and reinforced 4-point tipping axle)
	Other
Engine	Rated power (kW/hp)
	Maximum torque (N/m)
Chassis	Front axle
	Drive axle
Optional	Underproduction
	Height/light load/light gear/1 mesh

Note: ○-Optional ●-Standard. The above configuration parameters are for reference. The manufacturer reserves the right to change them without prior notice. The right to interpret them is reserved by the manufacturer.



## PHILIPPINES

### STRONG POWER AND BETTER DRIVE EXPERIENCE

Higher horse power engines range from 400 to 600 horse power, higher efficiency powertrain with strong load capability gives you confidence to overcome tough work conditions everywhere. Comfortable 316 cab offers better experience for drivers.

### ROBUST DESIGN WITH HIGH DURABILITY IN HARSH ENVIRONMENT

Outstanding adaptability ensures stable working in +20 °C to 50 °C environment with heavy payload. Air intake filter designed for working in dusty area. Reinforced 316mm height 8mm 8mm thickness chassis frame and offers outstanding durability. Sufficient tests and scientific simulations ensure reliability and trustworthy quality.

### INTELLIGENT AND SAFE

MarineLink™ Remote allows operators to monitor truck's state and location in real time. This helps operators to improve drive habit in order to reduce fuel consumption. The truck's GPS location can be tracked by managers, which helps to trace the truck's journey or set geofence. Result in safe operation of the trucks.



Product Model		Vehicle Engine
Dimensions (LxWxH(mm))		5720x2645x2910
Wheel base(mm)		3500/1200/1200
Economic Speed(kg/hp (Minimum/Max))		880/2640-3680
Economic Speed(kg/hp (Minimum/Max))		4000/1420
Economic Speed(kg/hp (Minimum/Max))		6000/1600
Economic Speed(kg/hp (Minimum/Max))		8000/1900
Economic Speed(kg/hp (Minimum/Max))		10000/2200
Economic Speed(kg/hp (Minimum/Max))		12000/2500
Economic Speed(kg/hp (Minimum/Max))		14000/2800
Economic Speed(kg/hp (Minimum/Max))		16000/3100
Economic Speed(kg/hp (Minimum/Max))		18000/3400
Economic Speed(kg/hp (Minimum/Max))		20000/3700
Economic Speed(kg/hp (Minimum/Max))		22000/4000
Economic Speed(kg/hp (Minimum/Max))		24000/4300
Economic Speed(kg/hp (Minimum/Max))		26000/4600
Economic Speed(kg/hp (Minimum/Max))		28000/4900
Economic Speed(kg/hp (Minimum/Max))		30000/5200
Economic Speed(kg/hp (Minimum/Max))		32000/5500
Economic Speed(kg/hp (Minimum/Max))		34000/5800
Economic Speed(kg/hp (Minimum/Max))		36000/6100
Economic Speed(kg/hp (Minimum/Max))		38000/6400
Economic Speed(kg/hp (Minimum/Max))		40000/6700
Economic Speed(kg/hp (Minimum/Max))		42000/7000
Economic Speed(kg/hp (Minimum/Max))		44000/7300
Economic Speed(kg/hp (Minimum/Max))		46000/7600
Economic Speed(kg/hp (Minimum/Max))		48000/7900
Economic Speed(kg/hp (Minimum/Max))		50000/8200
Economic Speed(kg/hp (Minimum/Max))		52000/8500
Economic Speed(kg/hp (Minimum/Max))		54000/8800
Economic Speed(kg/hp (Minimum/Max))		56000/9100
Economic Speed(kg/hp (Minimum/Max))		58000/9400
Economic Speed(kg/hp (Minimum/Max))		60000/9700
Economic Speed(kg/hp (Minimum/Max))		62000/10000
Economic Speed(kg/hp (Minimum/Max))		64000/10300
Economic Speed(kg/hp (Minimum/Max))		66000/10600
Economic Speed(kg/hp (Minimum/Max))		68000/10900
Economic Speed(kg/hp (Minimum/Max))		70000/11200
Economic Speed(kg/hp (Minimum/Max))		72000/11500
Economic Speed(kg/hp (Minimum/Max))		74000/11800
Economic Speed(kg/hp (Minimum/Max))		76000/12100
Economic Speed(kg/hp (Minimum/Max))		78000/12400
Economic Speed(kg/hp (Minimum/Max))		80000/12700
Economic Speed(kg/hp (Minimum/Max))		82000/13000
Economic Speed(kg/hp (Minimum/Max))		84000/13300
Economic Speed(kg/hp (Minimum/Max))		86000/13600
Economic Speed(kg/hp (Minimum/Max))		88000/13900
Economic Speed(kg/hp (Minimum/Max))		90000/14200
Economic Speed(kg/hp (Minimum/Max))		92000/14500
Economic Speed(kg/hp (Minimum/Max))		94000/14800
Economic Speed(kg/hp (Minimum/Max))		96000/15100
Economic Speed(kg/hp (Minimum/Max))		98000/15400
Economic Speed(kg/hp (Minimum/Max))		100000/15700
Economic Speed(kg/hp (Minimum/Max))		102000/16000
Economic Speed(kg/hp (Minimum/Max))		104000/16300
Economic Speed(kg/hp (Minimum/Max))		106000/16600
Economic Speed(kg/hp (Minimum/Max))		108000/16900
Economic Speed(kg/hp (Minimum/Max))		110000/17200
Economic Speed(kg/hp (Minimum/Max))		112000/17500
Economic Speed(kg/hp (Minimum/Max))		114000/17800
Economic Speed(kg/hp (Minimum/Max))		116000/18100
Economic Speed(kg/hp (Minimum/Max))		118000/18400
Economic Speed(kg/hp (Minimum/Max))		120000/18700
Economic Speed(kg/hp (Minimum/Max))		122000/19000
Economic Speed(kg/hp (Minimum/Max))		124000/19300
Economic Speed(kg/hp (Minimum/Max))		126000/19600
Economic Speed(kg/hp (Minimum/Max))		128000/19900
Economic Speed(kg/hp (Minimum/Max))		130000/20200
Economic Speed(kg/hp (Minimum/Max))		132000/20500
Economic Speed(kg/hp (Minimum/Max))		134000/20800
Economic Speed(kg/hp (Minimum/Max))		136000/21100
Economic Speed(kg/hp (Minimum/Max))		138000/21400
Economic Speed(kg/hp (Minimum/Max))		140000/21700
Economic Speed(kg/hp (Minimum/Max))		142000/22000
Economic Speed(kg/hp (Minimum/Max))		144000/22300
Economic Speed(kg/hp (Minimum/Max))		146000/22600
Economic Speed(kg/hp (Minimum/Max))		148000/22900
Economic Speed(kg/hp (Minimum/Max))		150000/23200
Economic Speed(kg/hp (Minimum/Max))		152000/23500
Economic Speed(kg/hp (Minimum/Max))		154000/23800
Economic Speed(kg/hp (Minimum/Max))		156000/24100
Economic Speed(kg/hp (Minimum/Max))		158000/24400
Economic Speed(kg/hp (Minimum/Max))		160000/24700
Economic Speed(kg/hp (Minimum/Max))		162000/25000
Economic Speed(kg/hp (Minimum/Max))		164000/25300
Economic Speed(kg/hp (Minimum/Max))		166000/25600
Economic Speed(kg/hp (Minimum/Max))		168000/25900
Economic Speed(kg/hp (Minimum/Max))		170000/26200
Economic Speed(kg/hp (Minimum/Max))		172000/26500
Economic Speed(kg/hp (Minimum/Max))		174000/26800
Economic Speed(kg/hp (Minimum/Max))		176000/27100
Economic Speed(kg/hp (Minimum/Max))		178000/27400
Economic Speed(kg/hp (Minimum/Max))		180000/27700
Economic Speed(kg/hp (Minimum/Max))		182000/28000
Economic Speed(kg/hp (Minimum/Max))		184000/28300
Economic Speed(kg/hp (Minimum/Max))		186000/28600
Economic Speed(kg/hp (Minimum/Max))		188000/28900
Economic Speed(kg/hp (Minimum/Max))		190000/29200
Economic Speed(kg/hp (Minimum/Max))		192000/29500
Economic Speed(kg/hp (Minimum/Max))		194000/29800
Economic Speed(kg/hp (Minimum/Max))		196000/30100
Economic Speed(kg/hp (Minimum/Max))		198000/30400
Economic Speed(kg/hp (Minimum/Max))		200000/30700
Economic Speed(kg/hp (Minimum/Max))		202000/31000
Economic Speed(kg/hp (Minimum/Max))		204000/31300
Economic Speed(kg/hp (Minimum/Max))		206000/31600
Economic Speed(kg/hp (Minimum/Max))		208000/31900
Economic Speed(kg/hp (Minimum/Max))		210000/32200
Economic Speed(kg/hp (Minimum/Max))		212000/32500
Economic Speed(kg/hp (Minimum/Max))		214000/32800
Economic Speed(kg/hp (Minimum/Max))		216000/33100
Economic Speed(kg/hp (Minimum/Max))		218000/33400
Economic Speed(kg/hp (Minimum/Max))		220000/33700
Economic Speed(kg/hp (Minimum/Max))		222000/34000
Economic Speed(kg/hp (Minimum/Max))		224000/34300
Economic Speed(kg/hp (Minimum/Max))		226000/34600
Economic Speed(kg/hp (Minimum/Max))		228000/34900
Economic Speed(kg/hp (Minimum/Max))		230000/35200
Economic Speed(kg/hp (Minimum/Max))		232000/35500
Economic Speed(kg/hp (Minimum/Max))		234000/35800
Economic Speed(kg/hp (Minimum/Max))		236000/36100
Economic Speed(kg/hp (Minimum/Max))		238000/36400
Economic Speed(kg/hp (Minimum/Max))		240000/36700
Economic Speed(kg/hp (Minimum/Max))		242000/37000
Economic Speed(kg/hp (Minimum/Max))		244000/37300
Economic Speed(kg/hp (Minimum/Max))		246000/37600
Economic Speed(kg/hp (Minimum/Max))		248000/37900
Economic Speed(kg/hp (Minimum/Max))		250000/38200
Economic Speed(kg/hp (Minimum/Max))		252000/38500
Economic Speed(kg/hp (Minimum/Max))		254000/38800
Economic Speed(kg/hp (Minimum/Max))		256000/39100
Economic Speed(kg/hp (Minimum/Max))		258000/39400
Economic Speed(kg/hp (Minimum/Max))		260000/39700
Economic Speed(kg/hp (Minimum/Max))		262000/40000
Economic Speed(kg/hp (Minimum/Max))		264000/40300
Economic Speed(kg/hp (Minimum/Max))		266000/40600
Economic Speed(kg/hp (Minimum/Max))		268000/40900
Economic Speed(kg/hp (Minimum/Max))		270000/41200
Economic Speed(kg/hp (Minimum/Max))		272000/41500
Economic Speed(kg/hp (Minimum/Max))		274000/41800
Economic Speed(kg/hp (Minimum/Max))		276000/42100
Economic Speed(kg/hp (Minimum/Max))		278000/42400
Economic Speed(kg/hp (Minimum/Max))		280000/42700
Economic Speed(kg/hp (Minimum/Max))		282000/43000
Economic Speed(kg/hp (Minimum/Max))		284000/43300
Economic Speed(kg/hp (Minimum/Max))		286000/43600
Economic Speed(kg/hp (Minimum/Max))		288000/43900
Economic Speed(kg/hp (Minimum/Max))		290000/44200
Economic Speed(kg/hp (Minimum/Max))		292000/44500
Economic Speed(kg/hp (Minimum/Max))		294000/44800
Economic Speed(kg/hp (Minimum/Max))		296000/45100
Economic Speed(kg/hp (Minimum/Max))		298000/45400
Economic Speed(kg/hp (Minimum/Max))		300000/45700
Economic Speed(kg/hp (Minimum/Max))		302000/46000
Economic Speed(kg/hp (Minimum/Max))		304000/46300
Economic Speed(kg/hp (Minimum/Max))		306000/46600
Economic Speed(kg/hp (Minimum/Max))		308000/46900
Economic Speed(kg/hp (Minimum/Max))		310000/47200
Economic Speed(kg/hp (Minimum/Max))		312000/47500
Economic Speed(kg/hp (Minimum/Max))		314000/47800
Economic Speed(kg/hp (Minimum/Max))		316000/48100
Economic Speed(kg/hp (Minimum/Max))		318000/48400
Economic Speed(kg/hp (Minimum/Max))		320000/48700
Economic Speed(kg/hp (Minimum/Max))		322000/49000
Economic Speed(kg/hp (Minimum/Max))		324000/49300
Economic Speed(kg/hp (Minimum/Max))		326000/49600
Economic Speed(kg/hp (Minimum/Max))		328000/49900
Economic Speed(kg/hp (Minimum/Max))		330000/50200
Economic Speed(kg/hp (Minimum/Max))		332000/50500
Economic Speed(kg/hp (Minimum/Max))		334000/50800
Economic Speed(kg/hp (Minimum/Max))		336000/51100
Economic Speed(kg/hp (Minimum/Max))		338000/51400
Economic Speed(kg/hp (Minimum/Max))		340000/51700
Economic Speed(kg/hp (Minimum/Max))		342000/52000
Economic Speed(kg/hp (Minimum/Max))		344000/52300
Economic Speed(kg/hp (Minimum/Max))		346000/52600
Economic Speed(kg/hp (Minimum/Max))		348000/52900
Economic Speed(kg/hp (Minimum/Max))		350000/53200
Economic Speed(kg/hp (Minimum/Max))		352000/53500
Economic Speed(kg/hp (Minimum/Max))		354000/53800
Economic Speed(kg/hp (Minimum/Max))		356000/54100
Economic Speed(kg/hp (Minimum/Max))		358000/54400
Economic Speed(kg/hp (Minimum/Max))		360000/54700
Economic Speed(kg/hp (Minimum/Max))		362000/55000
Economic Speed(kg/hp (Minimum/Max))		364000/55300
Economic Speed(kg/hp (Minimum/Max))		366000/55600
Economic Speed(kg/hp (Minimum/Max))		368000/55900
Economic Speed(kg/hp (Minimum/Max))		370000/56200
Economic Speed(kg/hp (Minimum/Max))		372000/56500
Economic Speed(kg/hp (Minimum/Max))		374000/56800
Economic Speed(kg/hp (Minimum/Max))		376000/57100
Economic Speed(kg/hp (Minimum/Max))		378000/57400
Economic Speed(kg/hp (Minimum/Max))		380000/57700
Economic Speed(kg/hp (Minimum/Max))		382000/58000
Economic Speed(kg/hp (Minimum/Max))		384000/58300
Economic Speed(kg/hp (Minimum/Max))		386000/58600
Economic Speed(kg/hp (Minimum/Max))		388000/58900
Economic Speed(kg/hp (Minimum/Max))		390000/59200
Economic Speed(kg/hp (Minimum/Max))		392000/59500
Economic Speed(kg/hp (Minimum/Max))		394000/59800
Economic Speed(kg/hp (Minimum/Max))		396000/60100
Economic Speed(kg/hp (Minimum/Max))		398000/60400
Economic Speed(kg/hp (Minimum/Max))		400000/60700
Economic Speed(kg/hp (Minimum/Max))		402000/61000
Economic Speed(kg/hp (Minimum/Max))		404000/61300
Economic Speed(kg/hp (Minimum/Max))		406000/61600
Economic Speed(kg/hp (Minimum/Max))		408000/61900
Economic Speed(kg/hp (Minimum/Max))		410000/62200
Economic Speed(kg/hp (Minimum/Max))		412000/62500
Economic Speed(kg/hp (Minimum/Max))		414000/62800
Economic Speed(kg/hp (Minimum/Max))		416000/63100
Economic Speed(kg/hp (Minimum/Max))		418000/63400
Economic Speed(kg/hp (Minimum/Max))		420000/63700
Economic Speed(kg/hp (Minimum/Max))		422000/64000
Economic Speed(kg/hp (Minimum/Max))		424000/64300
Economic Speed(kg/hp (Minimum/Max))		426000/64600
Economic Speed(kg/hp (Minimum/Max))		428000/64900
Economic Speed(kg/hp (Minimum/Max))		430000/65200
Economic Speed(kg/hp (Minimum/Max))		432000/65500
Economic Speed(kg/hp (Minimum/Max))		434000/65800
Economic Speed(kg/hp (Minimum/Max))		436000/66100
Economic Speed(kg/hp (Minimum/Max))		438000/66400
Economic Speed(kg/hp (Minimum/Max))		440000/66700
Economic Speed(kg/hp (Minimum/Max))		442000/67000
Economic Speed(kg/hp (Minimum/Max))		444000/67300
Economic Speed(kg/hp (Minimum/Max))		446000/67600
Economic Speed(kg/hp (Minimum/Max))		448000/67900
Economic Speed(kg/hp (Minimum/Max))		450000/68200
Economic Speed(kg/hp (Minimum/Max))		452000/68500
Economic Speed(kg/hp (Minimum/Max))		454000/68800
Economic Speed(kg/hp (Minimum/Max))		456000/69100
Economic Speed(kg/hp (Minimum/Max))		458000/69400
Economic Speed(kg/hp (Minimum/Max))		460000/69700
Economic Speed(kg/hp (Minimum/Max))		462000/70000
Economic Speed(kg/hp (Minimum/Max))		464000/70300
Economic Speed(kg/hp (Minimum/Max))		466000/70600
Economic Speed(kg/hp (Minimum/Max))		468000/70900
Economic Speed(kg/hp (Minimum/Max))		470000/71200
Economic Speed(kg/hp (Minimum/Max))		472000/71500
Economic Speed(kg/hp (Minimum/Max))		474000/71800
Economic Speed(kg/hp (Minimum/Max))		476000/72100
Economic Speed(kg/hp (Minimum/Max))		478000/72400
Economic Speed(kg/hp (Minimum/Max))		480000/72700
Economic Speed(kg/hp (Minimum/Max))		482000/73000
Economic Speed(kg/hp (Minimum/Max))		484000/73300
Economic Speed(kg/hp (Minimum/Max))		486000/73600
Economic Speed(kg/hp (Minimum/Max))		488000/73900
Economic Speed(kg/hp (Minimum/Max))		490000/74200
Economic Speed(kg/hp (Minimum/Max))		492000/74500
Economic Speed(kg/hp (Minimum/Max))		494000/74800
Economic Speed(kg/hp (Minimum/Max))		496000/75100
Economic Speed(kg/hp (Minimum/Max))		498000/75400
Economic Speed(kg/hp (Minimum/Max))		500000/75700
Economic Speed(kg/hp (Minimum/Max))		502000/76000
Economic Speed(kg/hp (Minimum/Max))		504000/76300
Economic Speed(kg/hp (Minimum/Max))		506000/76600
Economic Speed(kg/hp (Minimum/Max))		508000/76900
Economic Speed(kg/hp (Minimum/Max))		510000/7720

## THAILAND

### CORE ASSEMBLY WITH TOP SUPPLIERS

Suppliers are well-known manufacturers in the industry such as CATL battery, Ixon motor transmission and INVO/ANCE five-in-one control unit.

### OUTSTANDING POWER AND GRADEABILITY

Industry leading battery system with maximum motor power 460 kw, the maximum torque of 2900 nm. Gradeability can reach more than 36%, dynamic performance far exceeds the fuel dump truck.

### INTELLIGENT AND SAFETY

MercedesLink Terminal allows operators to monitor truck's state and location in real time. This helps operators to improve drive habits in order to reduce fuel consumption. Electronic braking system and parking system. 8 optional auxiliary driving package, active and passive safety functions ensure a much safer driving environment.



Thailand series dump truck model configuration and working condition recommended 2023-5 8K4 E-TPP8		572426-6168E2V	
Type		Standard Greenland EM3-D1656-A-888-A-MT-6-73	
Vehicle parameters	Dimensions (L x W x H) (mm)	5500/2400/2700	5500/2400/2700
	Wheel Base (mm)	4500/4500	4500/4500
	Cor. Weigh (kg)	22500	22500
	Full load Weight (kg)	62500	62500
	Rated Maximum Speed	100	100
Dump body	Permitted Maximum Speed	23km/h (6500/1500/1500mm)	23km/h (6500/1500/1500mm)
	Type	Backhanger	Backhanger
	Thickness (mm)	Bottom 12 side 10	Bottom 12 side 10
Cabin	UTCylinder type	4161794/450	4161794/450
	Type	318 flat top right hand door	318 flat top right hand door
Other configurations	Single sleeper, surround-type instrument platform, air conditioner, voice entertainment control large screen with Bluetooth function, entertainment control large screen with Bluetooth function, navigation function, radio function, USB and SD card interface, can connect with mobile phone to make and receive calls, support 2G/3G/4G LTE, ex-gate, three-step (third level activity)		
	Other configurations		
	Type	permanent magnet synchronous EM3-D1656	permanent magnet synchronous EM3-D1656
	Rated/pulse power (kW)	312/460	312/460
	Rated/pulse torque (Nm)	1629/2030	1629/2030
	Type	EMT	EMT
	Rated capacity (kWh)	330	330
	Arrangement type	Sub	Sub
	Recharge time (60°C/20% DOD, 240kWh double gear)	480min	480min
	Basic size (mm)	940-460/2168/694	940-460/2168/694
Specification	9.5T	9.5T	
View angle	Type	161	161
	Specification	161	161
Blower fan	Type	136	136
	Specification	136	136
Narrowed Leaf Springs	Type	16/72	16/72
	Specification	with	with
Rear stabilizer bar (with/without Manual/semi-automatic alloy)	Type	Steel	Steel
	Specification	8.75mm round	8.75mm round
Type	Type	12.0/52/4	12.0/52/4
	Specification	12.0/52/4	12.0/52/4
Braking system	Type	Pneumatic double circuit front and rear drum type ABS	Pneumatic double circuit front and rear drum type ABS
	Specification	Integral circuit type	Integral circuit type
Gearbox	Type	AS5 drive non-slip	AS5 drive non-slip
	Specification	AS5 drive non-slip	AS5 drive non-slip
Energy recovery regulation	Type	OTA	OTA
	Specification	OTA	OTA
Application recommendation	Type	None	None
	Specification	None	None
Typical scenario (note: 30% theoretical transportation with the characteristics of high power, high load, high payload, high protection, high reliability, high efficiency, low energy consumption products, meet the requirements of complete working conditions in mining areas, typical road, unpaved paths and compact-dominated, power load accounts for annual proportion full load 20-30km/half road) Commonly used speed.			
Note: X=does not adopt; ○=Optional Class Content; ●=Standard. The above configuration parameters are for reference. The manufacturer reserves the right to change them without prior notice. The right to interpret them is reserved by the manufacturer.			

Thailand series dump truck model configuration and working condition recommended 2023-5 8K4 E-TPP8		572426-6168E2V	
Type		Standard Greenland EM3-D1656-A-888-A-MT-6-73	
Vehicle parameters	Dimensions (L x W x H) (mm)	5500/2400/2700	5500/2400/2700
	Wheel Base (mm)	4500/4500	4500/4500
	Cor. Weigh (kg)	22500	22500
	Full load Weight (kg)	62500	62500
	Rated Maximum Speed	100	100
Dump body	Permitted Maximum Speed	23km/h (6500/1500/1500mm)	23km/h (6500/1500/1500mm)
	Type	Backhanger	Backhanger
	Thickness (mm)	Bottom 12 side 10	Bottom 12 side 10
Cabin	UTCylinder type	4161794/450	4161794/450
	Type	318 flat top right hand door	318 flat top right hand door
Other configurations	Single sleeper, surround-type instrument platform, air conditioner, voice entertainment control large screen with Bluetooth function, entertainment control large screen with Bluetooth function, navigation function, radio function, USB and SD card interface, can connect with mobile phone to make and receive calls, support 2G/3G/4G LTE, ex-gate, three-step (third level activity)		
	Other configurations		
	Type	permanent magnet synchronous EM3-D1656	permanent magnet synchronous EM3-D1656
	Rated/pulse power (kW)	312/460	312/460
	Rated/pulse torque (Nm)	1629/2030	1629/2030
	Type	EMT	EMT
	Rated capacity (kWh)	330	330
	Arrangement type	Sub	Sub
	Recharge time (60°C/20% DOD, 240kWh double gear)	480min	480min
	Basic size (mm)	940-460/2168/694	940-460/2168/694
Specification	9.5T	9.5T	
View angle	Type	161	161
	Specification	161	161
Blower fan	Type	136	136
	Specification	136	136
Narrowed Leaf Springs	Type	16/72	16/72
	Specification	with	with
Rear stabilizer bar (with/without Manual/semi-automatic alloy)	Type	Steel	Steel
	Specification	8.75mm round	8.75mm round
Type	Type	12.0/52/4	12.0/52/4
	Specification	12.0/52/4	12.0/52/4
Braking system	Type	Pneumatic double circuit front and rear drum type ABS	Pneumatic double circuit front and rear drum type ABS
	Specification	Integral circuit type	Integral circuit type
Gearbox	Type	AS5 drive non-slip	AS5 drive non-slip
	Specification	AS5 drive non-slip	AS5 drive non-slip
Energy recovery regulation	Type	OTA	OTA
	Specification	OTA	OTA
Application recommendation	Type	None	None
	Specification	None	None
Typical scenario (note: 30% theoretical transportation with the characteristics of high power, high load, high payload, high protection, high reliability, high efficiency, low energy consumption products, meet the requirements of complete working conditions in mining areas, typical road, unpaved paths and compact-dominated, power load accounts for annual proportion full load 20-30km/half road) Commonly used speed.			
Note: X=does not adopt; ○=Optional Class Content; ●=Standard. The above configuration parameters are for reference. The manufacturer reserves the right to change them without prior notice. The right to interpret them is reserved by the manufacturer.			

## UZBEKISTAN

### STRONG POWER AND BETTER DRIVE EXPERIENCE

Higher horse power engine ranges from 400 to 650 horse power, higher efficiency powertrain with strong load capability gives you confidence to overcome tough work conditions everywhere. Comfortable 318 cabin offers better experience for drivers.

### ROBUST DESIGN WITH HIGH DURABILITY IN HARSH ENVIRONMENT

Outstanding adaptability ensures stable working in -20°C to 50°C environment with heavy payload. Air intake filter designed for working in dusty area. Reinforced 31mm height, 6mm thickness chassis frame and offers outstanding durability. Sufficient tests and scientific simulations ensure reliability and trustworthy quality.

### INTELLIGENT AND SAFETY

MachineLink Terminal allows operators to monitor truck's state and location in real time. This helps operators to improve drive habit in order to reduce fuel consumption. The truck's GPS location can be tracked by managers, which helps to trace the truck's journey or set geofence. Result in safe operation of the trucks.



Uzbekistan Dump vehicle configuration and use condition recommendation	
Product Model	S/GZ62/483 V1
	Direct Transmission L4S26
	ZZ/10000A49
	88002504S380
Vehicle parameter	Dimension (LxWxH)(mm)
	4500x1800x1600
	Full Load Weight(kg)
	45300-55400
Body	Economic Speed Range(Maximum Gear)
	37-52
	Rated Maximum Speed
	71
Cab Model	Removable Cab
	318 cab, Standard cab with angled
	Removable, Central lock, Electric glass lifting, conditioning
	1000mm
Engine	Model
	4D2003A2
	Rated power (kW/hp)
	204/278
Chassis	Maximum torque (Nm/rpm)
	204/1500
	Auxiliary driving
	Electric Brake
Optional	Chassis
	Others
	Others
	Others
Product Model	S/GZ62/483 V1
	Direct Transmission L4S26
	ZZ/10000A49
	88002504S380
Vehicle parameter	Dimension (LxWxH)(mm)
	4500x1800x1600
	Full Load Weight(kg)
	45300-55400
Body	Economic Speed Range(Maximum Gear)
	37-52
	Rated Maximum Speed
	71
Cab Model	Removable Cab
	318 cab, Standard cab with angled
	Removable, Central lock, Electric glass lifting, conditioning
	1000mm
Engine	Model
	4D2003A2
	Rated power (kW/hp)
	204/278
Chassis	Maximum torque (Nm/rpm)
	204/1500
	Auxiliary driving
	Electric Brake
Optional	Chassis
	Others
	Others
	Others

Uzbekistan Dump vehicle configuration and use condition recommendation	
Product Model	S/GZ62/483 V1
	Direct Transmission L4S26
	ZZ/10000A49
	88002504S380
Vehicle parameter	Dimension (LxWxH)(mm)
	4500x1800x1600
	Full Load Weight(kg)
	45300-55400
Body	Economic Speed Range(Maximum Gear)
	37-52
	Rated Maximum Speed
	71
Cab Model	Removable Cab
	318 cab, Standard cab with angled
	Removable, Central lock, Electric glass lifting, conditioning
	1000mm
Engine	Model
	4D2003A2
	Rated power (kW/hp)
	204/278
Chassis	Maximum torque (Nm/rpm)
	204/1500
	Auxiliary driving
	Electric Brake
Optional	Chassis
	Others
	Others
	Others
Product Model	S/GZ62/483 V1
	Direct Transmission L4S26
	ZZ/10000A49
	88002504S380
Vehicle parameter	Dimension (LxWxH)(mm)
	4500x1800x1600
	Full Load Weight(kg)
	45300-55400
Body	Economic Speed Range(Maximum Gear)
	37-52
	Rated Maximum Speed
	71
Cab Model	Removable Cab
	318 cab, Standard cab with angled
	Removable, Central lock, Electric glass lifting, conditioning
	1000mm
Engine	Model
	4D2003A2
	Rated power (kW/hp)
	204/278
Chassis	Maximum torque (Nm/rpm)
	204/1500
	Auxiliary driving
	Electric Brake
Optional	Chassis
	Others
	Others
	Others







## GREEN, ZERO-EMISSION AND FUTURE-ORIENTED

- New generation of E-dumper has great advantage in the market.
- Market share No.1 in China of 2022.
- Outstanding cost efficiency; scenario like heavy duty downhill empty load uphill (gradient 10%) will have no electrical cost.
- Integrating solution for battery charging/swapping requirements.
- Five years 200,000km warranty for battery system, motor system and vehicle control system.



## SERVICE VALUE

Innovation, Excellence, Clients, Cooperation, Respect, Passion, Honesty, Responsibility  
Service mission: All for client, create value for customer

## SERVICE VISION

Exceed customer expectation and industry standards

### SERVICE COMMITMENT

- Reply customer within 15 minutes.
- Reach main service area within 2 hours.
- Solve general problems and provide regular parts within one day.
- Solve customer complaints with two days.
- Solve all issues within 7 days.

### SERVICE ADVANTAGE

"Professional service power": Sany has offices in over 200 countries and regions, with 11 subsidiaries and 35 service points in domestic together. Setting up the parts warehouse can cover the world range. Forming the four in one of parts supply and guarantee system by headquarters warehouse, regional center warehouse, provincial and prefecture-level city. Accommodating 80000 kinds of parts to ensure fully customer service requirements in time. "Professional operation and maintenance system": Sany has invested tens of million of RMB to build "Sany Customer cloud App", which enable customers to monitor the running status and parameters of the equipment in real time anywhere in the world. In addition, it provides online consultation, community communication, accessories mall, one-click repair, maintenance reservation, product knowledge learning and other value-added service. So the customer can easily enjoy the highest quality of service in any place of the world.

### MORE THAN JUST MACHINES

SANY provides equipment you can rely on and trust in any situation. But that's not all. We then blanket your machine with the kind of support you expect to keep you on the job – no matter where that job takes you. Backed by an industry-leading warranty and supported with local service you can count on, you'll always be confident in your decision to partner with SANY. Because with SANY, you get more than just machines.

